

**CITY OF MIRAMAR  
PROPOSED CITY COMMISSION AGENDA ITEM**

**Meeting Date:** June 3, 2026

**Presenter's Name and Title:** Steven Hastings, Deputy Director of Public Works and Alicia Ayum, Director of Procurement on behalf of Public Works and Procurement Departments

**Prepared By:** Kristy Gilbert, MBA, Assistant Public Works Director

**Temp. Reso. Number:** 8701

**Item Description:** Temp. Reso. #R8701; AUTHORIZING THE PURCHASE OF FIVE REPLACEMENT BUSES (TWO STARCRAFT ALLSTAR 22', TWO STARCRAFT ALLSTAR 27' AND ONE FORD E-TRANSIT 350) FOR THE SOCIAL SERVICES DEPARTMENT FROM MODEL 1 COMMERCIAL VEHICLES, INC., IN THE TOTAL COMBINED AMOUNT OF \$569,170; UTILIZING FLORIDA SHERIFF'S ASSOCIATION BID AWARD NO. FSA25-VEH23.0; DURING FISCAL YEAR 2026 (*Deputy Director of Public Works, Steven Hastings; Director of Procurement, Alicia Ayum*)

Consent  Resolution  Ordinance  Quasi-Judicial  Public Hearing

**Instructions for the Office of the City Clerk: None**

**Public Notice** – As required by the Sec. \_\_\_\_ of the City Code and/or Sec. \_\_\_\_, Florida Statutes, public notice for this item was provided as follows: on \_\_\_\_\_ in a \_\_\_\_\_ ad in the \_\_\_\_\_; by the posting the property on \_\_\_\_\_ and/or by sending mailed notice to property owners within \_\_\_\_\_ feet of the property on \_\_\_\_\_ (fill in all that apply)

**Special Voting Requirement** – As required by Sec. \_\_\_\_\_, of the City Code and/or Sec. \_\_\_\_, Florida Statutes, approval of this item requires a \_\_\_\_\_ (unanimous, 4/5ths etc.) vote by the City Commission.

**Fiscal Impact:** Yes  No


**REMARKS:** Funds totaling \$569,170 will be expended from Account No. 503-50-521-519-000-606440 entitled "Fleet Maintenance-Vehicles Purchase".

**Content:**

- **Agenda Item Memo from the City Manager to City Commission**
- **Resolution TR8701**
  - **Exhibit A: Florida Sheriff's Association Bid No. FSA25-VEH23.0**
- **Attachment(s)**
  - **Attachment 1: Model 1 Proposals**



**CITY OF MIRAMAR  
INTEROFFICE MEMORANDUM**

**TO:** Mayor, Vice Mayor, & City Commissioners  
**FROM:** Dr. Roy L. Virgin, City Manager   
**BY:** Shana Coombs, Chief Operations Officer/Public Works Director  
**DATE:** May 28, 2026  
**RE:** Temp. Reso. No. 8701 authorizing the Purchase of Five Replacement Buses for the Social Services Department

---

**RECOMMENDATION:** The City Manager recommends approval of the Temp. Reso. No. 8701, approving the purchase of five replacement buses for the Social Services Department, from Model 1 Commercial Vehicles, Inc., in the total combined amount of \$569,170; utilizing Florida Sheriff's Association Bid Award No. FSA25-VEH23.0.

**ISSUE:** City Commission approval is required for all expenditures exceeding the \$75,000 per vendor limit. This resolution authorizes expenditures with Model 1 in the amount of \$569,170 for Fiscal Year 2026 ("FY2026"). Section 2-413(7) of the City Code provides for purchases made through cooperative purchasing agreements with other governmental agencies to be exempt from the City's competitive procurement requirements.

**BACKGROUND:** The FY2026 Capital Outlay Budget adopted by the City Commission provides for the purchase of replacement fleet vehicles for the continuation of the City's annual vehicle acquisition program, which is in the eleventh year of implementation.

The City has previously utilized the Florida Sheriff's Association bid to purchase vehicles, and the pricing has been deemed beneficial to the City due to economies of scale. The Procurement Department has reviewed the prices, terms, and conditions of the Florida Sheriff's Association bid and recommends the purchase of the buses.

**DISCUSSION:** The Social Services Department is in need of replacement buses to better serve the needs of their programs. This purchase will replace five (5) buses that have reached the end of their useful economic life and are experiencing significantly increased

maintenance and repair costs. Retiring these aging units and introducing newer, more reliable vehicles will reduce downtime, lower operating expenses, and enhance the overall safety and efficiency of the transportation program.

The replacement buses come in a range of sizes, as outlined in the table below:

<b>Bus Type</b>	<b>Buses Being Purchased</b>	<b>Passenger Capacity</b>	<b>Wheelchair Capacity</b>
2024 Model Starcraft Allstar 22'	2	12	2
2026 Model Starcraft Allstar 27'	2	20	2
2023 Model Ford E-Transit 350	1	6	2

This fleet diversity enhances operational flexibility by allowing program staff to select the most appropriately sized vehicle for each transportation need. Smaller-capacity buses, in particular, will enable staff to transport medical patients to their appointments without deploying a full-size 20-seater vehicle, improving efficiency, and ensuring a more comfortable and tailored transportation experience. Each bus is equipped with ADA compliant wheelchair lifts.

**ANALYSIS:** Funds totaling \$569,170 will be expended from Account No. 503-50-521-519-000-606440 entitled "Fleet Maintenance-Vehicles Purchase".

Temp. Reso. No. 8701

4/15/26

5/28/26

**CITY OF MIRAMAR  
MIRAMAR, FLORIDA**

**RESOLUTION NO. \_\_\_\_\_**

**A RESOLUTION OF THE CITY COMMISSION OF THE CITY OF MIRAMAR, FLORIDA, AUTHORIZING THE PURCHASE OF FIVE REPLACEMENT BUSES, TWO STARCRAFT ALLSTAR 22', TWO STARCRAFT ALLSTAR 27' , AND ONE FORD E-TRANSIT 350 FOR THE SOCIAL SERVICES DEPARMENT FROM MODEL 1 COMMERCIAL VEHICLES, INC., IN THE TOTAL COMBINED AMOUNT OF \$569,170; UTILIZING FLORIDA SHERIFF'S ASSOCIATION BID AWARD NO. FSA25-VEH23.0 DURING FISCAL YEAR 2026; AND PROVIDING FOR AN EFFECTIVE DATE.**

**WHEREAS**, the FY2026 Capital Outlay Budget adopted by the City Commission provides for the purchase of replacement fleet vehicles for the continuation of the City's Annual Vehicle Acquisition Program, which is in the eleventh year of implementation; and

**WHEREAS**, a total of five (5) replacement buses are needed to better serve the needs of the Social Services programs; and

**WHEREAS**, Section 2-413(7) of the City Code provides for purchases made through cooperative purchasing agreements with other governmental agencies, such as the Florida Sheriff's Association Bid Award No. FSA25-VEH23.0, to be exempt from the City's competitive procurement requirements; and

**WHEREAS**, the City has previously utilized the Florida Sheriff's Association bid to make vehicles purchases; and

**WHEREAS**, City staff believes that utilizing the Florida Sheriff's Association Bid Award No. FSA25-VEH23.0 attached hereto as Exhibit "A," is in the best interest of the City; and

Reso. No. \_\_\_\_\_

Temp. Reso. No. 8701

4/15/26

5/28/26

**WHEREAS**, the City Manager recommends approving the purchase of five replacement buses, two Starcraft Allstar 22', two Starcraft Allstar 27', and one Ford E-Transit 350 for the Social Services Department, from Model 1 Commercial Vehicles, Inc., in the total combined amount of \$569,170, utilizing the Florida Sheriff's Association Bid Award No. FSA25-VEH23.0, during Fiscal Year 2026; and

**WHEREAS**, the City Commission deems it to be in the best interest of the citizens and residents of the City of Miramar to approve the purchase of five replacement buses two Starcraft Allstar 22', two Starcraft Allstar 27', and one Ford E-Transit 350 - for the Social Services Department, from Model 1 Commercial Vehicles, Inc., in the total combined amount of \$569,170; utilizing the Florida Sheriff's Association Bid Award No. FSA25-VEH23.0, during Fiscal Year 2026.

**NOW, THEREFORE, BE IT RESOLVED BY THE CITY COMMISSION OF THE CITY OF MIRAMAR, FLORIDA AS FOLLOWS:**

**Section 1:** That the foregoing "**WHEREAS**" clauses are ratified and confirmed as being true and correct and are made a specific part of this Resolution.

**Section 2:** That the City Commission approves the purchase of five replacement buses two Starcraft Allstar 22', two Starcraft Allstar 27', and one Ford E-Transit 350 for the Social Services Department, from Model 1 Commercial Vehicles, Inc., in the total combined amount of \$569,170, utilizing the Florida Sheriff's Association Bid Award No. FSA25-VEH23.0, during Fiscal Year 2026.

**Section 3:** That the appropriate City officials are authorized to do all things necessary and expedient to carry out the aims of this Resolution.

**Section 4:** That this Resolution shall take effect immediately upon adoption.

Temp. Reso. No. 8701

4/15/26

5/28/26

**PASSED AND ADOPTED** this \_\_\_\_\_ day of \_\_\_\_\_, \_\_\_\_\_.

\_\_\_\_\_  
Mayor, Wayne M. Messam

\_\_\_\_\_  
Vice Mayor, Carson "Eddy" Edwards

ATTEST:

\_\_\_\_\_  
City Clerk, Denise A. Gibbs

I HEREBY CERTIFY that I have approved  
this RESOLUTION as to form:

\_\_\_\_\_  
City Attorney,  
Austin Pamies Norris Weeks Powell, PLLC

<b><u>Requested by Administration</u></b>	<b><u>Voted</u></b>
Commissioner Maxwell B. Chambers	_____
Commissioner Avril Cherasard	_____
Commissioner Yvette Colbourne	_____
Vice Mayor Carson "Eddy" Edwards	_____
Mayor Wayne M. Messam	_____

# FSA Cooperative Purchasing Program



## FSA25-VEH23.0: Heavy Trucks and Buses Contract Packet



PROTECTING, LEADING & UNITING SINCE 1893

# FLORIDA SHERIFFS ASSOCIATION

2617 Mahan Drive  
Tallahassee, Florida 32308

p: (850) 877-2165 f: (850) 878-8665  
flsheriffs.org    

## NOTICE OF FINAL AWARD CONTRACT FSA25-VEH23.0: Heavy Trucks

Date: October 1, 2025

To: All Prospective Bidders and Purchasers

From: Matt Dunagan, Executive Director  
Sarrah Glassner, Deputy Executive Director of Administration  
Megan Taber, Cooperative Purchasing Program Director

Re: Contract Number FSA25-VEH23.0 Heavy Trucks: Contract Awards

We are pleased to announce that the Florida Sheriffs Association (FSA) has successfully completed its latest nationwide cooperative bid for Heavy Trucks. This contract is in effect beginning October 1, 2025, through September 30, 2027.

This notification is for the Florida Sheriffs Association (FSA), Cooperative Purchasing Program (CPP) Intent to Award for contract FSA25-VEH23.0 : Heavy Trucks. All bids were received in a timely manner, reviewed, and evaluated by the FSA and its Fleet Advisory Committee.

The contract specifications include:

- Buses Electric: 19 to 20 Passenger Capacity Range, Van-Type Cutaway Chassis
- Buses Electric: 20 to 52 Passenger Capacity Range, Conventional-Type Chassis
- Buses Electric: 44 To 80 Passenger Capacity Range, Commercial-Type Chassis
- Buses: 14 to 25 Passenger Capacity Range, Van-Type Cutaway Chassis
- Buses: 20 to 52 Passenger Capacity Range, Conventional Truck-Type Cutaway Chassis
- Buses: 33 to 54 Passenger Capacity Range, Commercial-Type, Rear Engine Chassis
- Buses: 36 to 52 Passenger Capacity Range, Commercial-Type, Front Engine Chassis
- Cab and Chassis Trucks Electric: 54,000 lbs. GVWR 4x6 Semi Tractor
- Cab and Chassis Trucks Electric: Conventional Cab 33,000 lbs. GVWR (DRW) 4x2
- Cab and Chassis Trucks Electric: Tilt Cab 26,000 lbs. GVWR (DRW) 4x2
- Cab and Chassis Trucks: 17,500 lbs. GVWR (DRW) 4x2
- Cab and Chassis Trucks: 17,500 lbs. GVWR (DRW) 4x4
- Cab and Chassis Trucks: 25,500 lbs. GVWR (DRW) 4x2

- Cab and Chassis Trucks: 30,000 lbs. GVWR (DRW) 4x2
- Cab and Chassis Trucks: 52,000 lbs. GVWR Semi Tractor 4x6
- Cab and Chassis Trucks: 52,000 lbs. GVWR Truck 4x6
- Cab and Chassis Trucks: 12,000 lbs. GVWR (DRW) 4x2 Tilt Cab
- Cab and Chassis Trucks: 25,000 lbs. GVWR (DRW) 4x2 Tilt Cab
- Refuse Truck Electric: 60,000 lbs. GVWR 4x6 (cab and chassis only)
- Refuse Truck: 60,000 lbs. GVWR 4x6 (cab and chassis only)
- Refuse Truck: Compact 9.5 Cubic Yds. Self-Loading Refuse Truck
- Tactical Armored Vehicles
- Terminal Tractor
- Spray Truck: 19,500 lbs. GVWR 4x2, Mounted 1,000 gal ROW Spray Unit
- Utility Truck: 33,000 lbs. GVWR 4x4, Digger Derrick
- Utility Truck: 33,000 lbs. GVWR 4x4, Mounted Aerial Device

The competitive process for this award began in March of 2025, when FSA Fleet Advisory Committee, bidders, and stakeholders provided input regarding heavy truck and equipment procurement needs. Specifications were developed based on prior years activity, and new additions were included based on feedback from the FSA Committee, bidders, and stakeholders.

Advertisements of the Invitation to Bid (ITB) were placed on the FSA website on March 28, 2025, and within the Florida Administrative Register on March 28, 2025, and May 1, 2025.

From the ITB, 40 bidders completed the pre-bid process. Of these respondents, 34 submitted bids. 28 responsive bidders were awarded after bids were evaluated by the FSA Fleet Advisory Committee and FSA staff.

The Florida Sheriffs Association Cooperative Purchasing Program has followed the Contract Terms and Conditions to procure this contract.

Contract prices are extended and guaranteed to any local government or political subdivision of the state, public educational institutions, other public agencies or authorities with the State of Florida, and other entities approved by the manufacturer to participate in this contract.

Out-of-state sales are permitted under this contract. All purchasers are bound by their local governing purchasing ordinances, rules and regulations.

All awarded vendors are governed by their manufacturer agreements and the Contract Terms and Conditions.

List of Intended Awards in Alphabetical Order:

- All Roads Kenworth, LLC.
- Altec Industries, Inc.
- Bachrodt FT, LLC. Dba Palmetto Ford of Miami
- Beck Chrysler Dodge Jeep

- Bozard Ford
- Broyhill Equipment, LLC.
- Container Systems & Equipment Co., Inc.
- Cumberland International Trucks of Florida
- DeLand Truck Center, Inc.
- Duval Ford, LLC.
- Florida Kenworth, LLC.
- Florida Transportation Systems, Inc.
- Kenworth of Jacksonville
- Matthews Bus Alliance, Inc.
- Model 1 Commercial Vehicles, Inc.
- Nextran Truck Centers
- Orlando Freightliner
- Ottawa Trucks Center, Inc.
- RDK Assets, Inc.
- Rehtien International Trucks
- Ring Power Corporation
- Rush Truck Centers of Florida, Inc.
- SBL Freightliner, LLC.
- Sun State International Trucks
- Tampa Truck Center
- Terradyne Armored Vehicles, Inc.
- The Peterbilt Store South Florida, LLC.
- Truckmax, Inc.

The final award page document for all awarded bid items is attached.

# FSA Cooperative Purchasing Program



**FSA25-VEH23.0: Heavy Trucks and Buses  
Awarded Vendor Contract Signature Pages**



## CONTRACT SIGNATURE FORM

By submitting a response to this Invitation to Bid and signing this form, the Bidder declares that he or she has read, and the company understands, accepts and will comply with the terms, conditions and specifications of this bid and any addenda issued. The failure or omission to review this document shall in no way relieve the authorized agent of obligations with respect to this bid. The submission of a bid and signature below shall be taken as evidence of acceptance of the terms and conditions of this bid.

The Bidder further declares that no other persons other than the authorized agent herein named has any interest in this bid or in the contract to be taken, and that it is made without any connection with any other person or persons making proposal for the same article, and is in all respects fair and without collusion or fraud.

The Bidder further declares that they have carefully examined the specifications and is thoroughly familiar with its provisions and with the quality, type and grade of materials required.

The Bidder further declares that they have provided a discount on all factory options included in this bid, and such discount will be included in all purchase orders.

The Bidder further declares that the company understands the financial responsibility associated with this bid as stated and further declares that it has the ability to meet the financial responsibility associated with this bid.

The Bidder further declares that the company will furnish the items awarded for the price bid.

FSA Contract Number FSA25-VEH23.0: Heavy Trucks and Buses

Bidder Company Name Model 1 Commercial Vehicles, Inc.

Business Address 9225 Priority Way W Dr, Suite 300  
Indianapolis, IN 46240

Name of Authorized Agent Jason Spore

Email address of authorized agent biddepartment@creativebussales.com

Signed by:  
Signature   
8DC5A6ED5A194FC...

Date 9/29/2025

---

FSA Contract Number

FSA25-VEH23.0: Heavy Trucks and Buses

Bidder Company Name Model 1 Commercial Vehicles, Inc.

# FSA Cooperative Purchasing Program



## FSA25-VEH23.0: Heavy Trucks and Buses Final Award Report

**Bid Award**

**Contract:** FSA25-VEH23.0, Heavy Trucks and Buses

**Group:** Buses: 14 to 25 Passenger Capacity Range, Van-Type Cutaway Chassis

**Item:** 10, Starcraft, Allstar, Allstar

**Description:** Refer FSA Base Specifications PDF document.

**Model Upgrade/Downgrade:**

<b>Zone</b>	<b>Rank</b>	<b>Vendor</b>	<b>Price</b>	<b>Build File</b>	<b>Options File</b>
Western	Primary	Model 1 Commercial Vehicles, Inc.	\$88,276.00	<a href="#">Build</a>	<a href="#">Options</a>
Northern	Primary	Model 1 Commercial Vehicles, Inc.	\$88,276.00	<a href="#">Build</a>	<a href="#">Options</a>
Central	Primary	Model 1 Commercial Vehicles, Inc.	\$88,276.00	<a href="#">Build</a>	<a href="#">Options</a>
Southern	Primary	Model 1 Commercial Vehicles, Inc.	\$88,276.00	<a href="#">Build</a>	<a href="#">Options</a>

This attachment can be emailed for review.



2024

# STARCRAFT

## Allstar 22'

### ATTACHMENT 1

### PRICE PROPOSAL

Prepared for

**Florida Sheriffs**

**Association Contract Item  
10**

#### CONTACT

Date Issued: 4-2-2026

Name: Les Burres

Phone: 904-537-7710

Email: lburres@model1.com



Whether you need to fill a spot in your fleet or create an entirely new vehicle, your Model 1 experts have a single top priority: *you*. With a clear understanding of your needs, we find ways to deliver – starting with deep relationships all the way back at the manufacturer level. And with the nation's largest inventory of commercial vehicles, you'll never be short on the best choices to make for your business.

#### **SALES EXPERIENCE**

550+ Years of Collective Bus  
Sales Experience Servicing Over  
1,500 Customers Annually

#### **COMPETITIVE PRICING**

Volume Discounts  
Fixed Contract Pricing

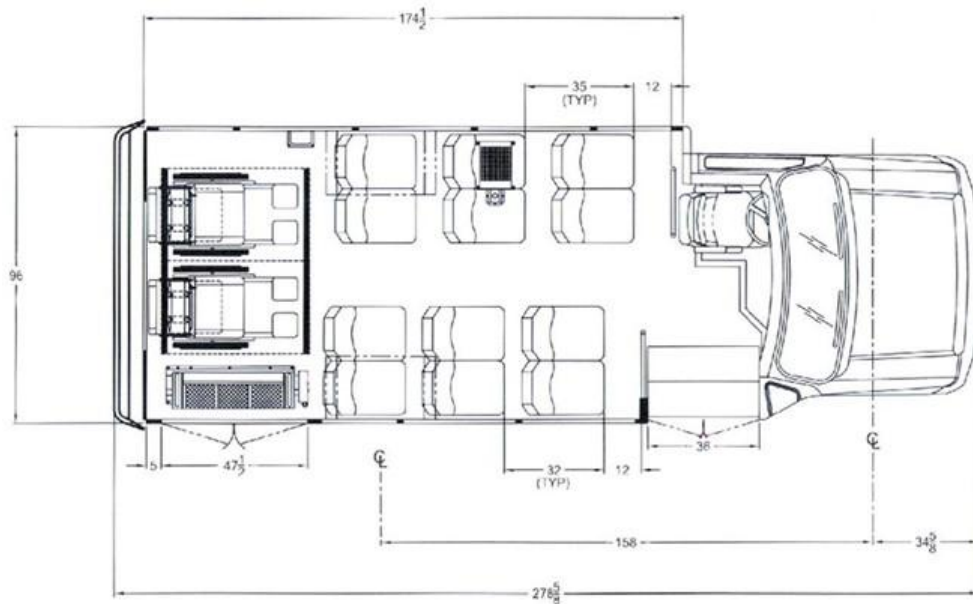
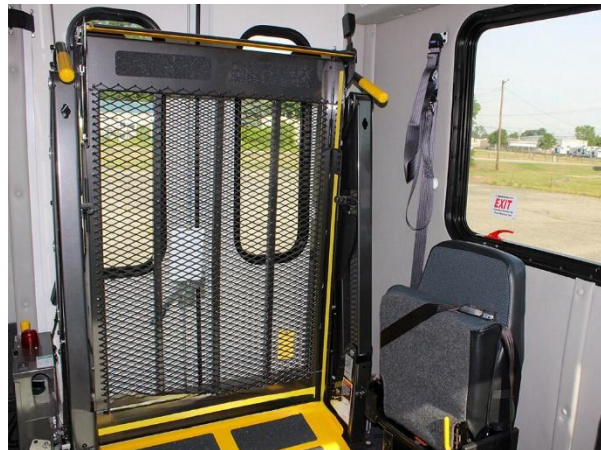
#### **IN-HOUSE FINANCING**

Seamless Transactions  
Flexible Solutions

#### **NATIONWIDE NETWORK**

21 Full-Service Locations  
Nationwide Partners with  
25+ Top Manufacturers

# IMAGES & FLOORPLAN



# SPECIFICATIONS

## CHASSIS

- 2024 Ford E-450
- Engine: 7.3L V-8
- Fuel Type: Gas

## EXTERIOR

- Exterior Color: White
- Wheelbase: 158"
- Passenger Door 36" Electric Rough Opening
- Double W/C Doors w/ Windows & Leaf Spring

## INTERIOR

- Driver Area: Grey padded vinyl
- Walls and Ceiling: Grey padded vinyl
- Flooring: Gerflor Sirius Graphite Grey
- Ceiling grab rail on street side
- Left Hand Entry Vertical Grab Rail – 1 ¼"
- 1 ¼" dual entry grab rails parallel to entrance steps (both sides)
- Stanchion and modesty panel at entry door & behind driver
- Driver storage in cab overhead

## A/C & HEAT

- A/C System: TA733 Super 70K Dual Compressor
- Heater: 70K BTU floor mounted, 3 speed low profile OK side sliders

## LIGHTING

- Door activated interior lights
- Surface mount LED entry door exterior light
- LED Interior and Exterior Lighting

## ELECTRICAL

- 240 AMP OEM alternator
- Intermotive Flex Tech Electrical System
- Wiring Diagram "AS BUILT" on USB Flash Drive

## AUDIO / VISUAL

- OEM AM/FM/BT Radio w/ 4 Speakers
- Rosco back-up camera system w/ 7" rearview monitor/mirror combo

## WHEELCHAIR ACCESSIBILITY

- 34" x 54" Braun wheelchair lift located in the rear of the unit
- Intermotive Gateway Transit Fast Idle with lift interlock

## ACCESSORIES

- Q-8201-L Standard Retractor Tie Down Kit (2)
- Priority seating sign \*\*Required for ADA Compliance\*\*
- Wheelchair Decal

## SAFETY

- Back-up alarm SAE type C 97 db(A)

## PASSENGER SEATING OPTIONS

- 12 Passenger, 2 Wheelchair
- 13 Passenger, 1 Wheelchair
- 14 Passenger, 0 Wheelchair

## SEATING

Passenger Seating:

- Seat Fabric: Level 6 Duratex Jordan Blue
- Mid high, double seat (6)
- Econo Flip, single seat (2)
- Seat belt, non-retractable (14)
- Seat belt loop (14)
- Anti-vandal grab handle on aisle seats (6)

Driver Seating: SHIELD FC Recliner, RH Arm, 4 Position Lumbar, Mesh Pocket

- Driver Seat Cover: Level 6 Duratex Jordan Blue Cloth

---

# WARRANTY

Manufacturer Warranty	Starcraft 5-year / 100,000 miles
Chassis Warranty	Ford E-450 Bumper to Bumper: 3 Year / 36,000 Miles Ford E-450 Powertrain: 5 Year / 60,000 Miles

All vehicles come with warranty, but Model 1 offers more value without the added cost.

Our coverage and support come with each of our new vehicles – *standard*.

### ***WE PROCESS ALL THE WARRANTY REGISTRATIONS***

We register all of your bus parts for you, no more pesky warranty cards to fill out. This includes *all* parts, wheelchair lift, electronics, HVAC, etc.

### ***WE HANDLE ALL THE PAPERWORK***

We administer and coordinate any warranty work. You make one call to our warranty department, and they take it from there.

### ***REPAIR FACILITIES NEAR YOU***

When warranty work is needed, we use service repair facilities near the bus location. We have over 3200 authorized centers and growing. You will never have to drive far to get repairs completed.

### ***NO MORE CLAIM FORMS***

Model 1 handles all parts of the claim process, you will have no out of pocket expenses, no reimbursements, and the service facility will be paid directly by us.

### ***LONGER WARRANTY PERIOD***

We have negotiated extended periods for the units we sell. Unprecedented 60 month/100,000 mile bumper-to-bumper warranty on the Starcraft bus upfit.

# PRICING

<i>DESCRIPTION</i>	<i>AMOUNT</i>
Base Bus Cost	\$ 88,276.00
Option 10 additions to stock bus	\$55,738.00
Options 10 subtractions compared to base bus.	-\$1,191.00
Dealer Discount	-\$20,000.00
<b>Total</b>	<b>\$122,823.00*</b>

\*Pricing does not include tax.

2026

# Starcraft

Allstar 27' FSA25-VEH23.0: Heavy Trucks and Buses

Prepared for  
**Florida Sheriffs  
Association Contract**

**CONTACT**

Date Issued: 4-2-2026  
Name: Les Burres  
Phone: 904-537-7710  
Email: lburres@model1.com



Whether you need to fill a spot in your fleet or create an entirely new vehicle, your Model 1 experts have a single top priority: *you*. With a clear understanding of your needs, we find ways to deliver – starting with deep relationships all the way back at the manufacturer level. And with the nation’s largest inventory of commercial vehicles, you’ll never be short on the best choices to make for your business.

**SALES EXPERIENCE**

550+ Years of Collective Bus  
Sales Experience Servicing Over  
1,500 Customers Annually

**COMPETITIVE PRICING**

Volume Discounts  
Fixed Contract Pricing

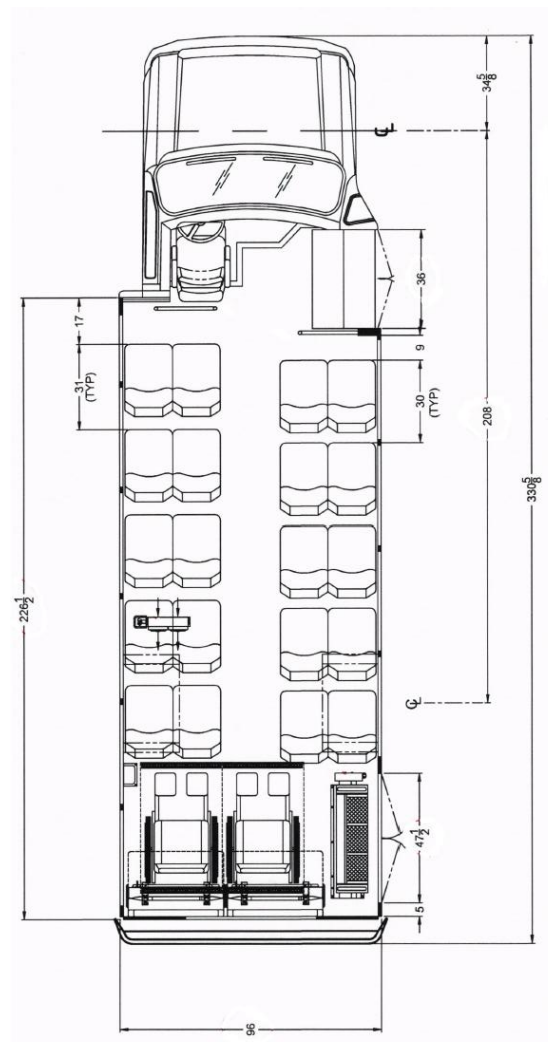
**IN-HOUSE FINANCING**

Seamless Transactions  
Flexible Solutions

**NATIONWIDE NETWORK**

21 Full-Service Locations  
Nationwide Partners with  
25+ Top Manufacturers

# IMAGES & FLOORPLAN



# SPECIFICATIONS

## CHASSIS

- 2026 Ford E450
- Engine: 7.3L V8
- Fuel Type: Gas
- GVWR: 14,500 lbs.
- Wheelbase: 208"

## EXTERIOR

- Exterior Color: White
- Passenger Entry Door: 36" Wide Rough Opening, Electric
- Front Mud Flap (1)
- Black Extruded Aluminum Running Board on Driver Side
- Front Destination Sign Window and Overhead Access Door
- Side Destination Sign Window w/ Structure

## INTERIOR

- 96" Interior Width
- Driver Area: Grey padded vinyl
- Walls and Ceiling: Grey padded vinyl
- Flooring: Gerflor Sirius Graphite Gray
- Ceiling grab rail on both sides
- Left Hand Entry Vertical Grab Rail – 1 ¼"
- 1 ¼" dual entry grab rails parallel to entrance steps (both sides)
- Stanchion and modesty panel at entry door & behind driver
- Driver storage in cab overhead – ABS Box

## A/C & HEAT

- A/C System: TA733 Super 70K Ceiling Mount Evap
- Heater: Hot Water Heater 70K BTU floor mounted

## LIGHTING

- Door activated interior lights
- Surface mount LED entry door exterior light
- LED Interior and Exterior Lighting

## ELECTRICAL

- Intermotive Flex Tech Electrical System
- Wiring Diagram "AS BUILT" on USB Flash Drive
- E Series Single Door / Switch Panel Visor Shroud

## AUDIO / VISUAL

- Ford OEM Radio with 4 speakers
- REI 750407 PA System w/ Handheld Mic & Clip Integrated w/ OEM Radio

## WHEELCHAIR ACCESSIBILITY

- Rear Double W/C Doors w/ Windows & Leaf Springs
- Braun Century Wheelchair Lift, 34" x 54" Platform, 800-Lb Cap.
- Seat Belt on Braun Lift
- Intermotive Gateway Transit Fast Idle with Lift Interlock

## WHEELCHAIR ACCESSORIES

- Q'Straint Q-8201-L Standard Retractor Tie Down Kit (2)
- Q'Straint Belt Storage Pouch
- Priority seating sign \*\*Required for ADA Compliance\*\*
- Wheelchair Decal

## SAFETY

- Back-up alarm SAE type C 97 db(A)
- Rosco back-up camera system w/ 7" rearview monitor/mirror combo
- Interior Convex Mirror – 6"x9"

## PASSENGER SEATING OPTIONS

- 24 Ambulatory, 0 Wheelchair
- 22 Ambulatory, 1 Wheelchair
- 20 Ambulatory, 2 Wheelchair

## SEATING

- Driver Seating:
  - SHIELD FC Recliner, RH Arm, 4 Position Lumbar, Mesh Pocket
  - Driver Seat Cover: Level 6 Duratex Jordan Blue
- Passenger Seating:
  - Mid High, Double Seat (10)
  - Econo Flip, Double Seat (2)
  - Seat Fabric: Level 6 Duratex Jordan Blue (24)
  - Seat belt, non-retractable (24)
  - Seat belt loop (24)
  - Anti-vandal grab handle on aisle seats (10)

---

# WARRANTY

Manufacturer Warranty	Starcraft:	5 Year / 100,000 Miles
Chassis Warranty	Ford Bumper-to-Bumper:	3 Year / 36,000 Miles
	Ford Powertrain Warranty:	5 Year / 100,000 Miles

All vehicles come with warranty, but Model 1 offers more value without the added cost.

Our coverage and support come with each of our new vehicles – *standard*.

## ***WE PROCESS ALL THE WARRANTY REGISTRATIONS***

We register all of your bus parts for you, no more pesky warranty cards to fill out. This includes *all* parts, wheelchair lift, electronics, HVAC, etc.

## ***WE HANDLE ALL THE PAPERWORK***

We administer and coordinate any warranty work. You make one call to our warranty department, and they take it from there.

## ***REPAIR FACILITIES NEAR YOU***

When warranty work is needed, we use service repair facilities near the bus location. We have over 3200 authorized centers and growing. You will never have to drive far to get repairs completed.

## ***NO MORE CLAIM FORMS***

Model 1 handles all parts of the claim process, you will have no out of pocket expenses, no reimbursements, and the service facility will be paid directly by us.

## ***LONGER WARRANTY PERIOD***

We have negotiated extended periods for the units we sell. Unprecedented 60 month/100,000 mile bumper-to-bumper warranty on the Starcraft bus upfit.

# PRICING

<i>DESCRIPTION</i>	<i>AMOUNT</i>
Base Bus Cost Item 10	\$88,276.00
Added Options Content FSA Item 10	\$72,036.00 (See attached Option List)
Dealer Discount	-\$25,000.00
<b>Total</b>	<b>\$135,312.00*</b>

\*Pricing does not include tax.

2023

**FORD**

**E-Transit 350**

FSA25-VEH23.0, Heavy Trucks and Buses

*Florida Sheriffs Association  
Contract*

**CONTACT**

Date Issued:

Name: Les Burres

Phone: 904-537-7710

Email: lburres@model1.com



Whether you need to fill a spot in your fleet or create an entirely new vehicle, your Model 1 experts have a single top priority: *you*. With a clear understanding of your needs, we find ways to deliver – starting with deep relationships all the way back at the manufacturer level. And with the nation’s largest inventory of commercial vehicles, you’ll never be short on the best choices to make for your business.

**SALES EXPERIENCE**

550+ Years of Collective Bus  
Sales Experience Servicing Over  
1,500 Customers Annually

**COMPETITIVE PRICING**

Volume Discounts  
Fixed Contract Pricing

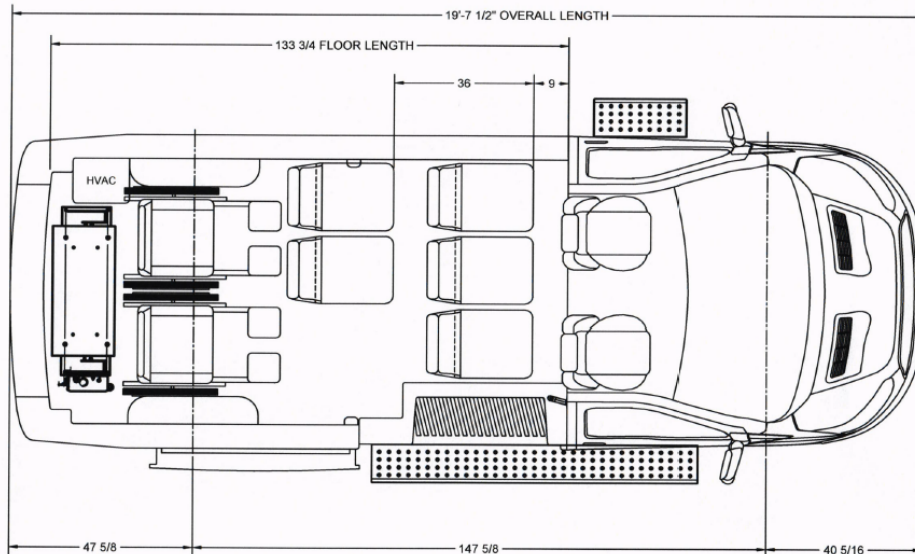
**IN-HOUSE FINANCING**

Seamless Transactions  
Flexible Solutions

**NATIONWIDE NETWORK**

21 Full-Service Locations  
Nationwide Partners with  
25+ Top Manufacturers

# IMAGES & FLOORPLAN



# SPECIFICATIONS

## CHASSIS

- 2023 Ford E-Transit 350, Medium Roof Van
- Engine: Ford OEM Electric Motor, Single, Rear
- Drive: Rear Wheel Drive
- Power: 198 kW / 266 HP / 317 TQ
- Battery: 68 kWh
- Fuel Type: Electric
- Floor-mounted single pack Li-ion battery
- GVWR: 9,500

## EXTERIOR

- Wheelbase: 148"
- Running board on driver side, short step
- Running board on passenger side, full
- Exterior Color: White

## INTERIOR

- Flooring: Gerflor Black Graphite
- Pareto Flooring Kit
- Long Wheelbase ABS Plastic Interior w/ 6 LED Dome Lights Mid Roof
- Entry grab rail (stanchion) on right side (B pillar)

## A/C & HEAT

- E-Transit HVAC System: Twin Air TM431F-E Floor Mount 31K BTU A/C
- 28K BTU Heat

## CHARGING

- On Board Charger 105 kw out/11.3 kW in
- Charging time:
  - 15-80% DCFC (115 kW) 34 min
  - 15-80% (50 kW) 65 min
  - 0-100% 240V L2 (48A) 8 hours
  - 0-100% 240V L2 (30A) ~12 hours

## ELECTRICAL

- Intermotive Flex Tech Electrical System

## AUDIO / VISUAL

- Sync 4 AM/FM/Bluetooth Radio

## WHEELCHAIR ACCESSIBILITY

- 34" x 51" Braun wheelchair lift located in the rear of the unit – 800 Lb. Capacity
- Intermotive Gateway Transit Fast Idle with lift interlock

## ACCESSORIES

- QRT Deluxe Retractor Q' Straint securement kit (2)
- L Track Oval Pocket Wheelchair/Shoulder & Lap Belt Mount

## SAFETY

- OEM back-up alarm
- First aid kit, Fire extinguisher, Triangles

## PASSENGER SEATING OPTIONS

- 6 Ambulatory, 2 Wheelchair

## SEATING

Passenger Seating:

- Seat Fabric (3): OEM Fabric
- OEM Driver and Co-pilot Seating
- OEM Seats (5)

---

# WARRANTY

## Manufacturer Warranty

- Forest River 5 Year/ 100,000 miles

## Chassis Warranty

- Ford Warranty: Unique Electrified Components 8 year/100,000 miles
- Bumper to Bumper: 3 Years/ 36,000 miles
- Powertrain: 5 Years / 60,000 Miles



All vehicles come with warranty, but Model 1 offers more value without the added cost.

Our coverage and support come with each of our new vehicles – *standard*.

### ***WE PROCESS ALL THE WARRANTY REGISTRATIONS***

We register all of your bus parts for you, no more pesky warranty cards to fill out. This includes *all* parts, wheelchair lift, electronics, HVAC, etc.

### ***WE HANDLE ALL THE PAPERWORK***

We administer and coordinate any warranty work. You make one call to our warranty department, and they take it from there.

### ***REPAIR FACILITIES NEAR YOU***

When warranty work is needed, we use service repair facilities near the bus location. We have over 3,200 authorized centers and growing. You will never have to drive far to get repairs completed.

### ***NO MORE CLAIM FORMS***

Model 1 handles all parts of the claim process, you will have no out of pocket expenses, no reimbursements, and the service facility will be paid directly by us.

# PRICING

<i>DESCRIPTION</i>	<i>AMOUNT</i>
Item 10 Base Bus Cost	\$88,276.00
Electric ADA Passenger Van option	\$23,857.00
Dealer Discount	-\$59,233.00
<b>Total</b>	<b>\$52,900.00*</b>

\*Pricing does not include tax.