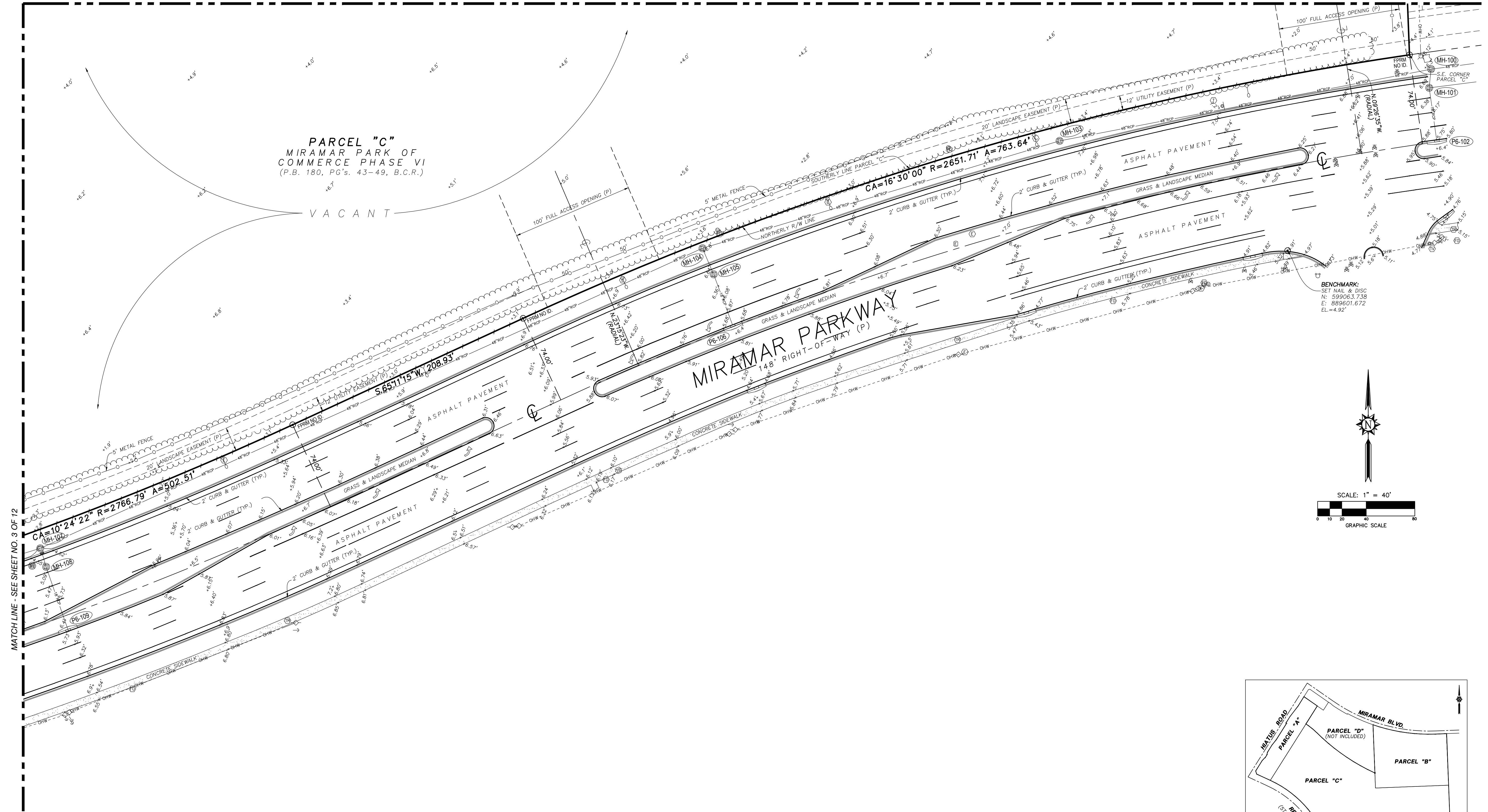
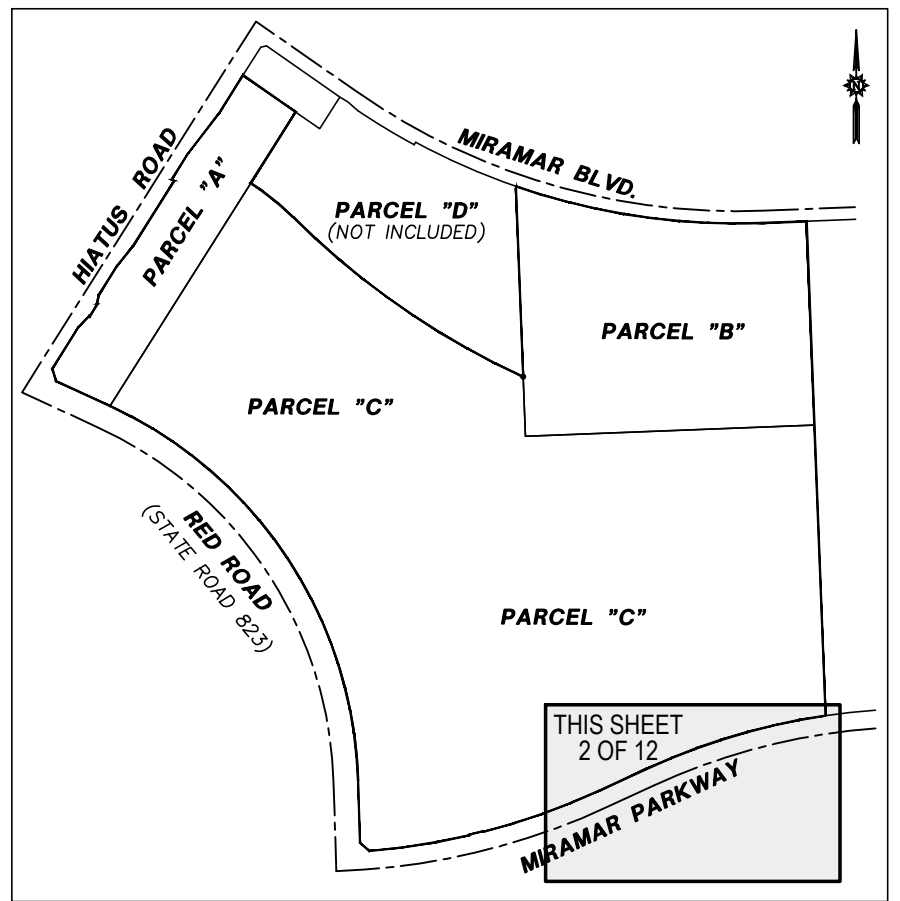
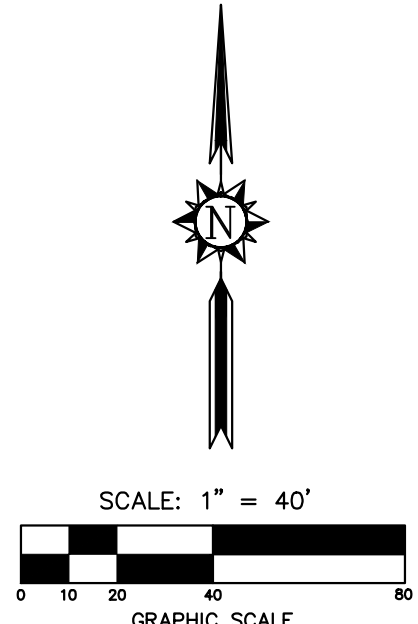


SKETCH OF BOUNDARY AND TOPOGRAPHIC SURVEY

MATCH LINE - SEE SHEET NO. 6 OF 12



BENCHMARK:
 SET NAIL & DISC
 N: 599063.738
 E: 889601.672
 EL: 4.92'



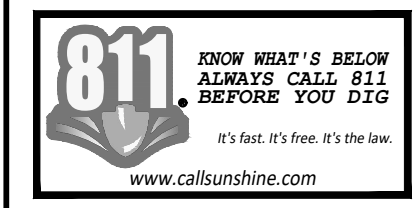
KEY MAP
NO TO SCALE

PARCEL "C"
MIRAMAR PARK OF
COMMERCE PHASE VI
(P.B. 180, PG'S. 43-49, B.C.R.)

VACANT

MIRAMAR PARKWAY
148' RIGHT-OF-WAY (P)

MATCH LINE - SEE SHEET NO. 3 OF 12



ELEVATIONS SHOWN HEREON ARE BASED ON THE NORTH AMERICAN VERTICAL DATUM 1988 (NAVD 1988)

VERTICAL DATUM CONVERSION:
 ALL ELEVATIONS SHOWN HEREON ARE REFERENCED TO NAVD 88
 VERTICAL DATUM UNLESS NOTED OTHERWISE. TO CONVERT FROM NAVD
 88 TO NGVD 29 DATUM ADD (+) 1.58' TO THE NAVD 88 ELEVATIONS.

NO.	REVISION	DATE	BY:

TEL: (954) 585-0997
 WWW.STONERSURVEYORS.COM

STONER
 SURVEYORS & MAPPERS
 Licensed Business No. 6633
 4341 S.W. 62nd AVENUE, DAVIE, FLORIDA 33314

BOUNDARY AND TOPOGRAPHIC SURVEY
SUNBEAM DEVELOPMENT CORP.
PARCELS "A", "B" AND "C",
MIRAMAR PARK OF COMMERCE PHASE VI,
PLAT BOOK 180, PAGES 43 THRU 50, B.C.R.,
CITY OF MIRAMAR, FLORIDA

LAST DATE OF FIELD SURVEY: 8/17/22
 DRAWN: DMS/DRL
 CHECKED: JDS
 BOOK/PAGE(S): 160/1-27
 & DATA COLLECTOR

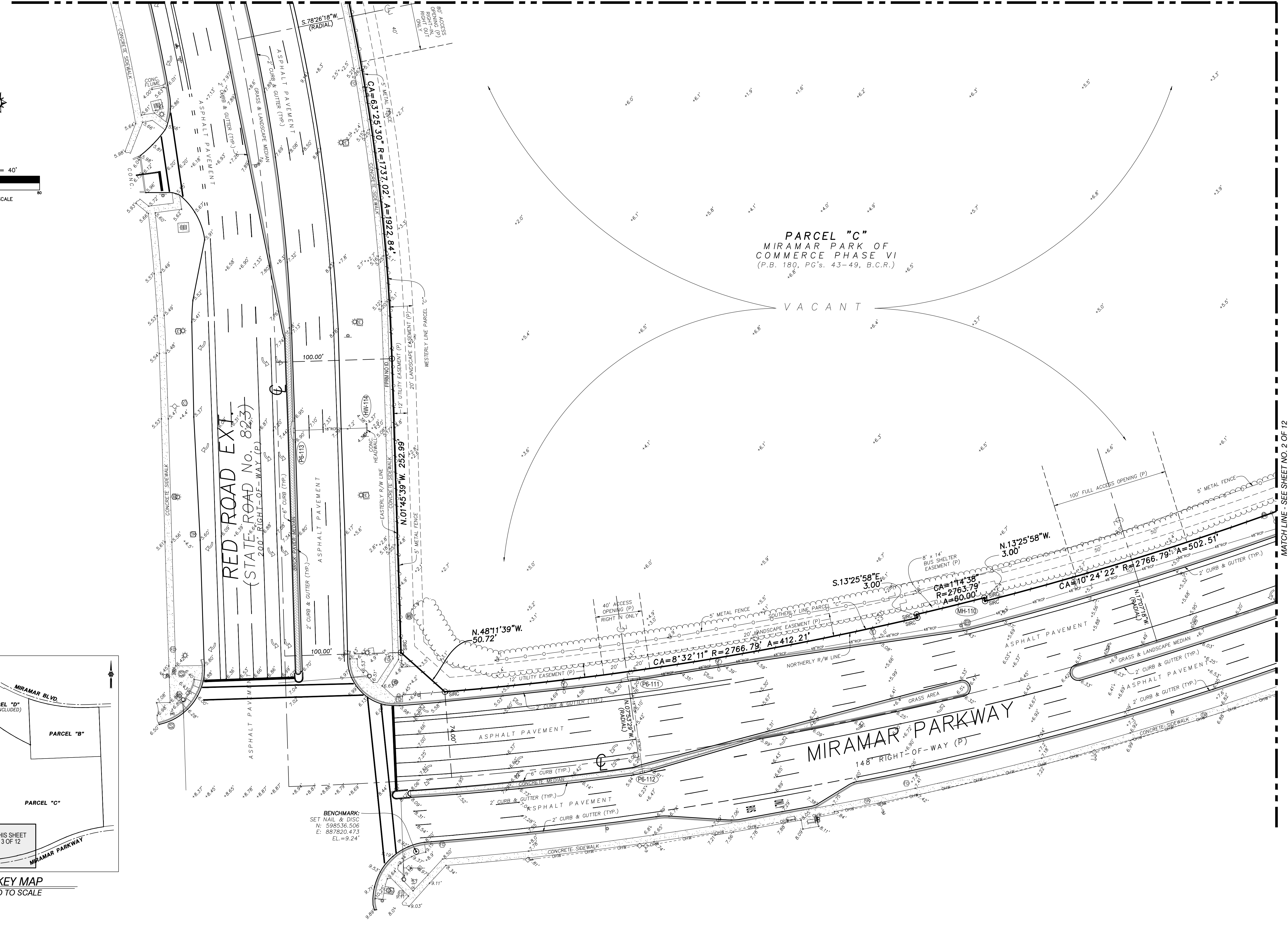
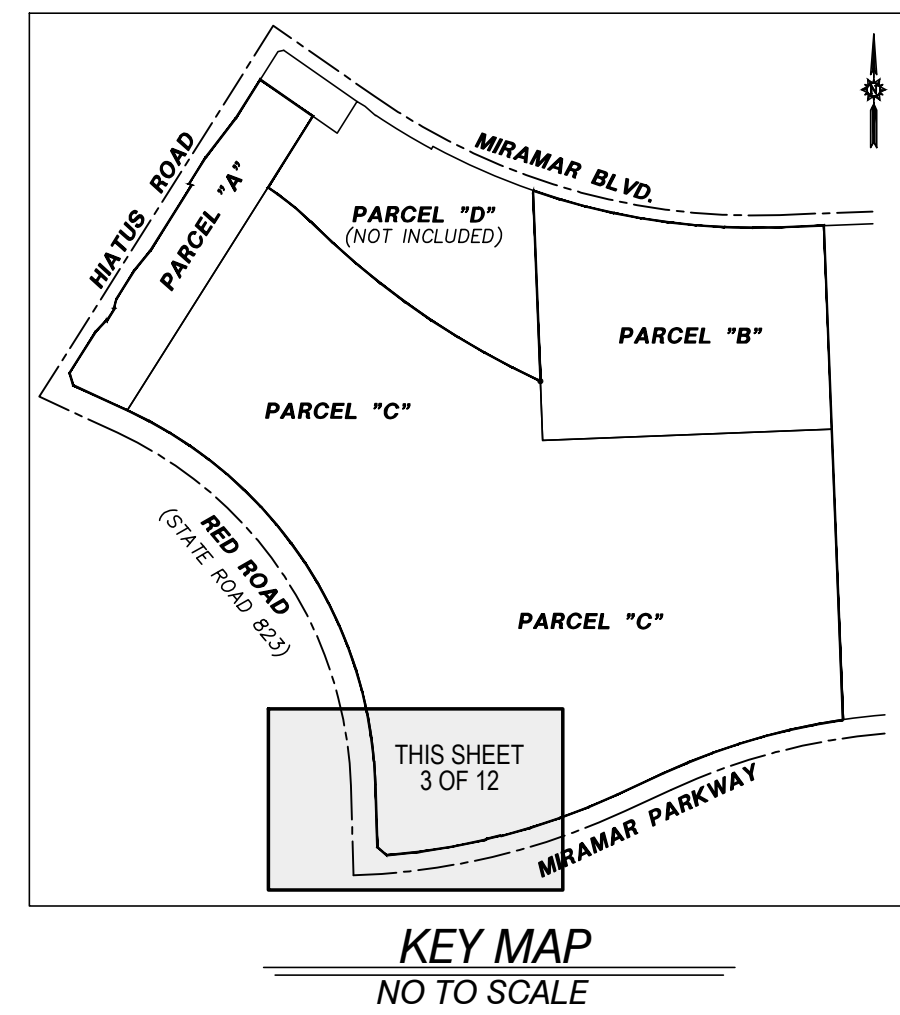
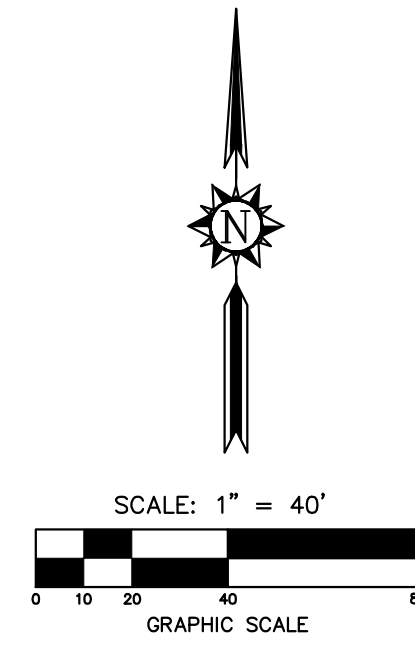
SEAL
 JAMES D. STONER
 PROFESSIONAL SURVEYOR
 AND MAPPER NO. 4039
 STATE OF FLORIDA

PROJECT
 22-9426

SHEET NO.
 2 OF 12

SKETCH OF BOUNDARY AND TOPOGRAPHIC SURVEY

MATCH LINE - SEE SHEET NO. 5 OF 12



MATCH LINE - SEE SHEET NO. 2 OF 12

NO.	REVISION	DATE	BY:

TEL: (954) 585-0997
www.stonersurveyors.com

STONER
SURVEYORS • MAPPERS
Licensed Business No. 6633

4341 S.W. 62nd AVENUE, DAVIE, FLORIDA 33314

BOUNDARY AND TOPOGRAPHIC SURVEY
SUNBEAM DEVELOPMENT CORP.
PARCELS "A", "B" AND "C",
MIRAMAR PARK OF COMMERCE PHASE VI,
PLAT BOOK 180, PAGES 43 THRU 50, B.C.R.,
CITY OF MIRAMAR, FLORIDA

LAST DATE OF FIELD SURVEY	8/17/22
DRAWN: DMS / DNL	
CHECKED: JDS	
BOOK/PAGE(S)	160/1-27
& DATA COLLECTOR	

SEAL
JAMES D. STONER
PROFESSIONAL SURVEYOR
AND MAPPER NO. 4039
STATE OF FLORIDA

PROJECT
22-9426

SHEET NO.
3 OF 12



ELEVATIONS SHOWN HEREON ARE BASED ON THE NORTH AMERICAN VERTICAL DATUM 1988 (NAVD 1988)

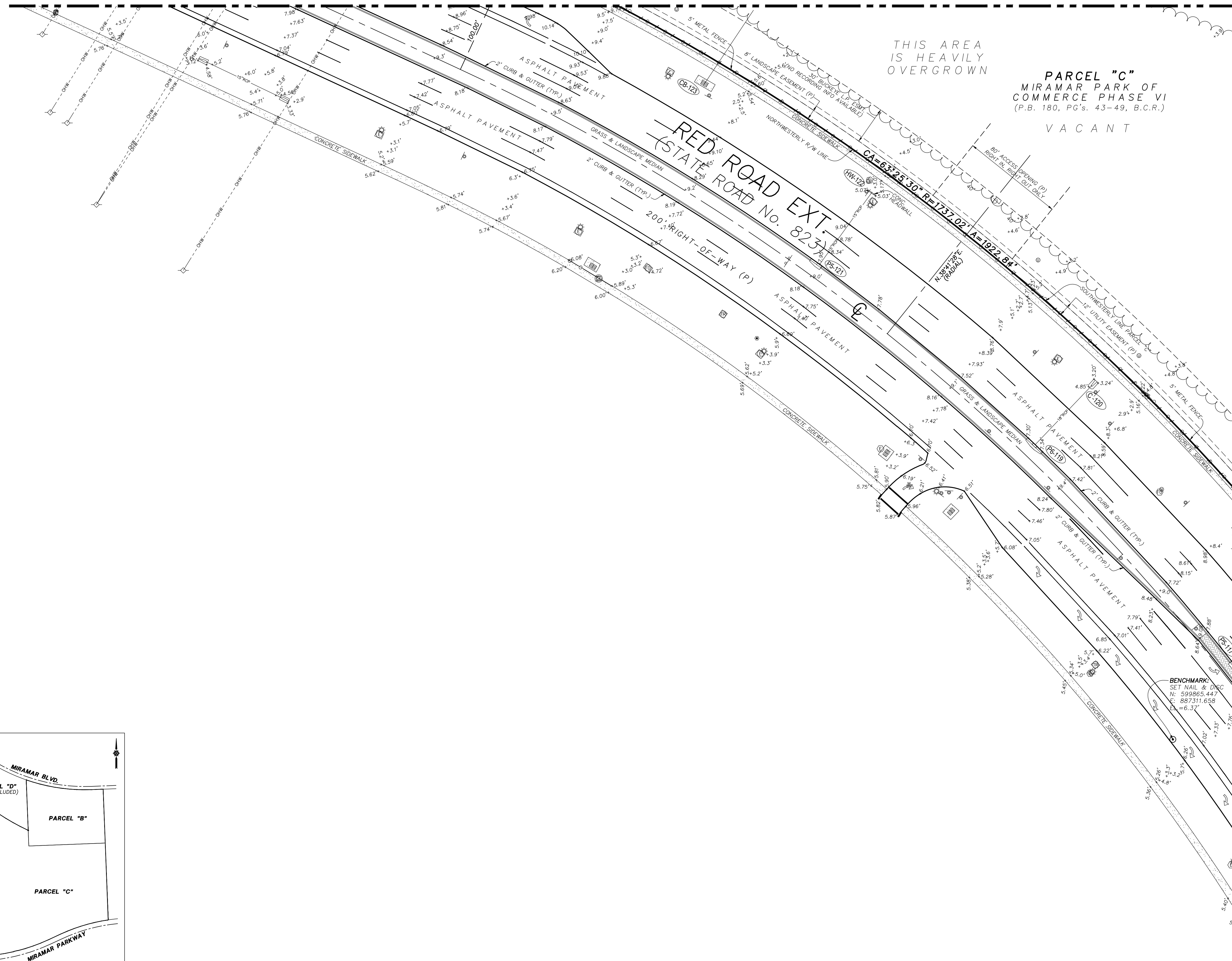
VERTICAL DATUM CONVERSION:
ALL ELEVATIONS SHOWN HEREON ARE REFERENCED TO NAVD 88. VERTICAL DATUM UNLESS NOTED OTHERWISE, TO CONVERT FROM NAVD 88 TO NGVD 29 DATUM ADD (+) 1.58' TO THE NAVD 88 ELEVATIONS.

SKETCH OF BOUNDARY AND TOPOGRAPHIC SURVEY

MATCH LINE - SEE SHEET NO. 9 OF 12

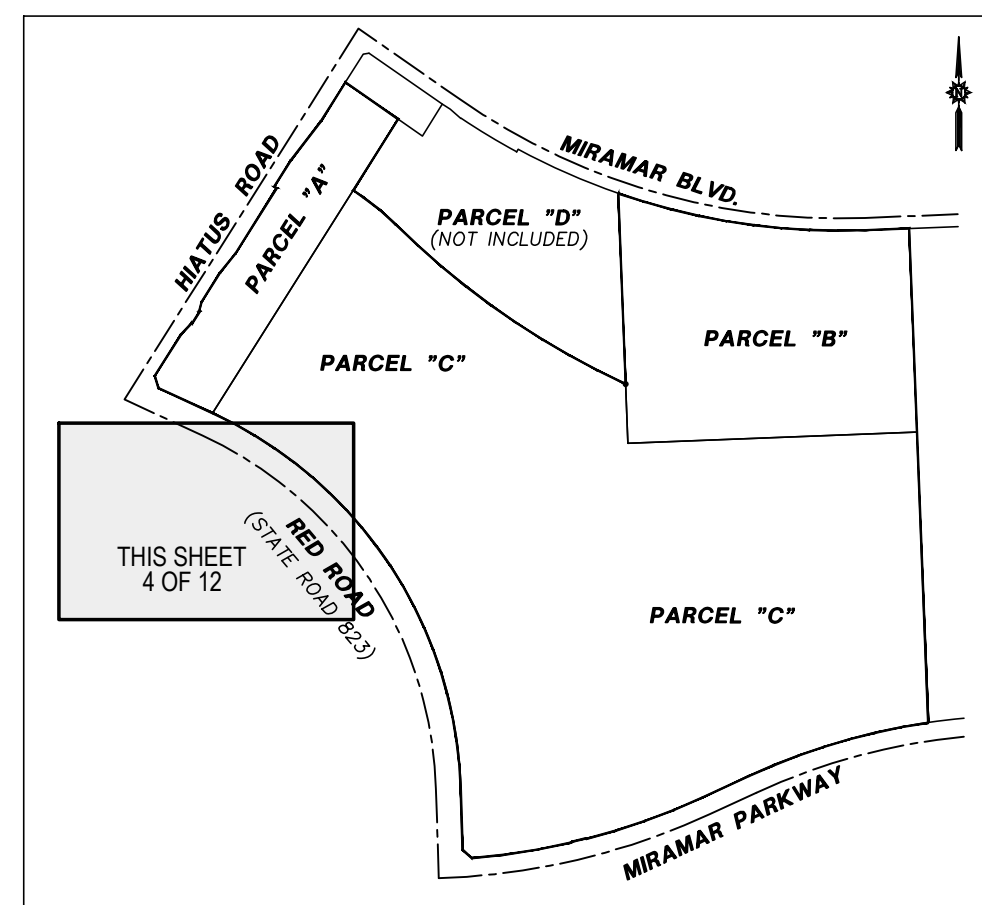
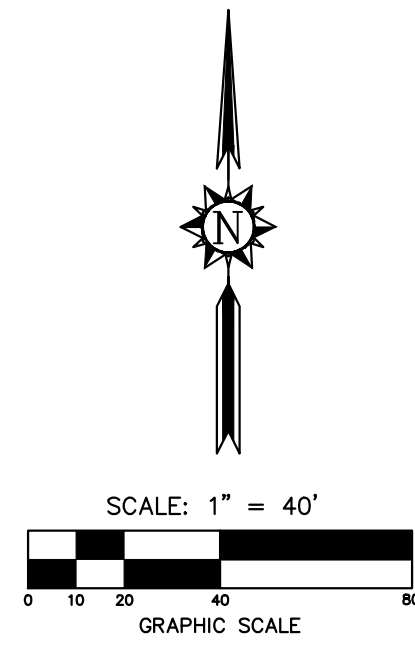
THIS AREA IS HEAVILY OVERGROWN

PARCEL "C"
MIRAMAR PARK OF
COMMERCE PHASE VI
(P.B. 180, PG'S. 43-49, B.C.R.)
VACANT



MATCH LINE - SEE SHEET NO. 8 OF 12

MATCH LINE - SEE SHEET NO. 3 OF 12



KEY MAP
NO TO SCALE



ELEVATIONS SHOWN HEREON ARE BASED ON THE NORTH AMERICAN VERTICAL DATUM 1988 (NAVD 1988)

VERTICAL DATUM CONVERSION:

ALL ELEVATIONS SHOWN HEREON ARE REFERENCED TO NAVD 88
VERTICAL DATUM UNLESS NOTED OTHERWISE. TO CONVERT FROM NAVD
88 TO NGVD 29 DATUM ADD (+) 1.58' TO THE NAVD 88 ELEVATIONS.

NO.	REVISION	DATE	BY:

TEL: (954) 585-0997
WWW.STONERSURVEYORS.COM



STONER
SURVEYORS & MAPPERS
Licensed Business No. 6633
4341 S.W. 62nd AVENUE, DAVIE, FLORIDA 33314

BOUNDARY AND TOPOGRAPHIC SURVEY
SUNBEAM DEVELOPMENT CORP.
PARCELS "A", "B" AND "C",
MIRAMAR PARK OF COMMERCE PHASE VI,
PLAT BOOK 180, PAGES 43 THRU 50, B.C.R.,
CITY OF MIRAMAR, FLORIDA

LAST DATE OF FIELD SURVEY	08/17/22
DRAWN: DMS/DRL	
CHECKED: JDS	
BOOK/PAGE(S)	160/1-27
& DATA COLLECTOR	

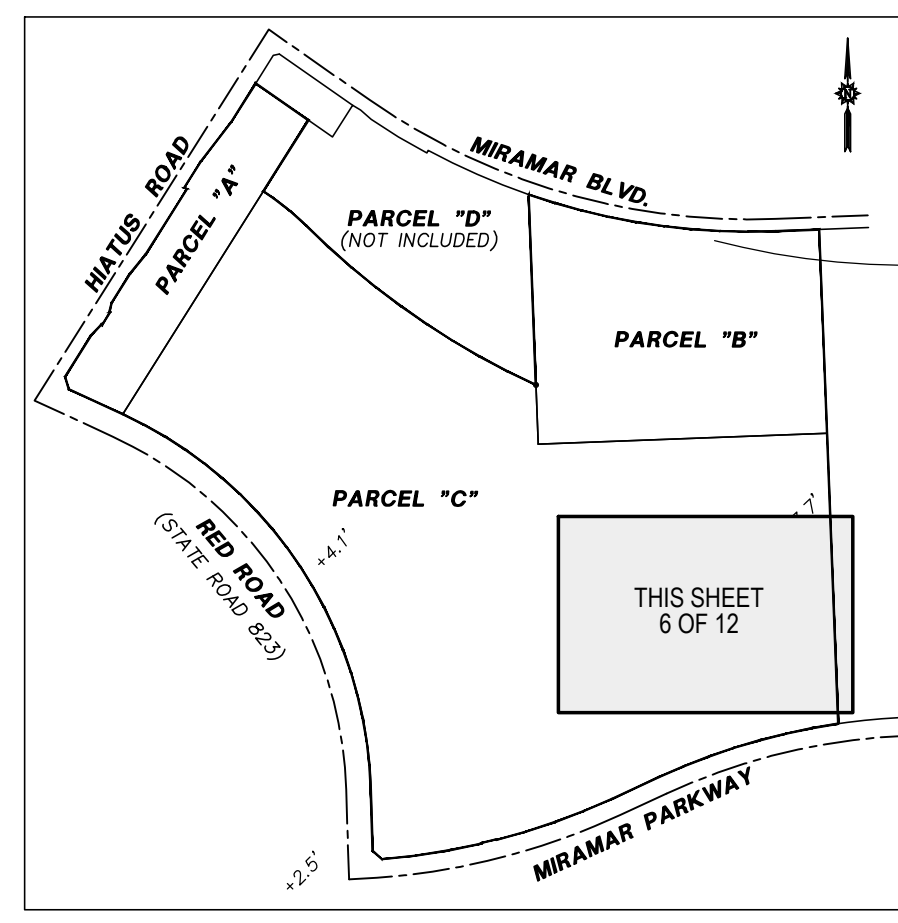
SEAL
JAMES D. STONER
PROFESSIONAL SURVEYOR
AND MAPPER NO. 4039
STATE OF FLORIDA

PROJECT
22-9426

SHEET NO.
4 OF 12

SKETCH OF BOUNDARY AND TOPOGRAPHIC SURVEY

MATCH LINE - SEE SHEET NO. 7 OF 12



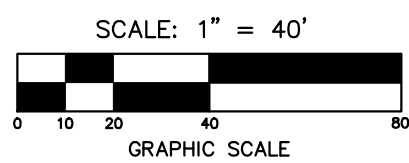
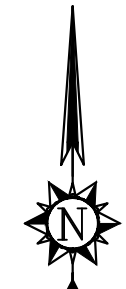
KEY MAP
NO TO SCALE

MATCH LINE - SEE SHEET NO. 5 OF 12

PARCEL "C"
MIRAMAR PARK OF
COMMERCE PHASE VI
(P.B. 180, PG'S. 43-49, B.C.R.)

VACANT

BENCHMARK:
SET 5/8" IRON ROD
& CAP LB 6633
N: 599557.697
E: 888927.727
EL. = 6.25'



DIRT PILE

THIS AREA IS HEAVILY
OVERGROWN

S.0212'41"E. 2012.88

PARCEL "D"
MIRAMAR PARK OF COMMERCE PHASE III
(P.B. 161, PG. 29, B.C.R.)

MATCH LINE - SEE SHEET NO. 2 OF 12

NO.	REVISION	DATE	BY

TEL (954) 585-0997
www.stonersurveyors.com

STONER
SURVEYORS • MAPPERS
Licensed Business No. 6633

4341 S.W. 62nd AVENUE, DAVIE, FLORIDA 33314

BOUNDARY AND TOPOGRAPHIC SURVEY
SUNBEAM DEVELOPMENT CORP.
MIRAMAR PARK OF COMMERCE PHASE VI,
PARCELS "A", "B" AND "C",
PLAT BOOK 180, PAGES 43 THRU 50, B.C.R.,
CITY OF MIRAMAR, FLORIDA

LAST DATE OF FIELD SURVEY	08/17/22
DRAWN: DMS/DRL	
CHECKED: JDS	
BOOK/PAGE(S)	160/1-27
& DATA COLLECTOR	

SEAL
JAMES D. STONER
PROFESSIONAL SURVEYOR
AND MAPPER NO. 4039
STATE OF FLORIDA

PROJECT
22-9426

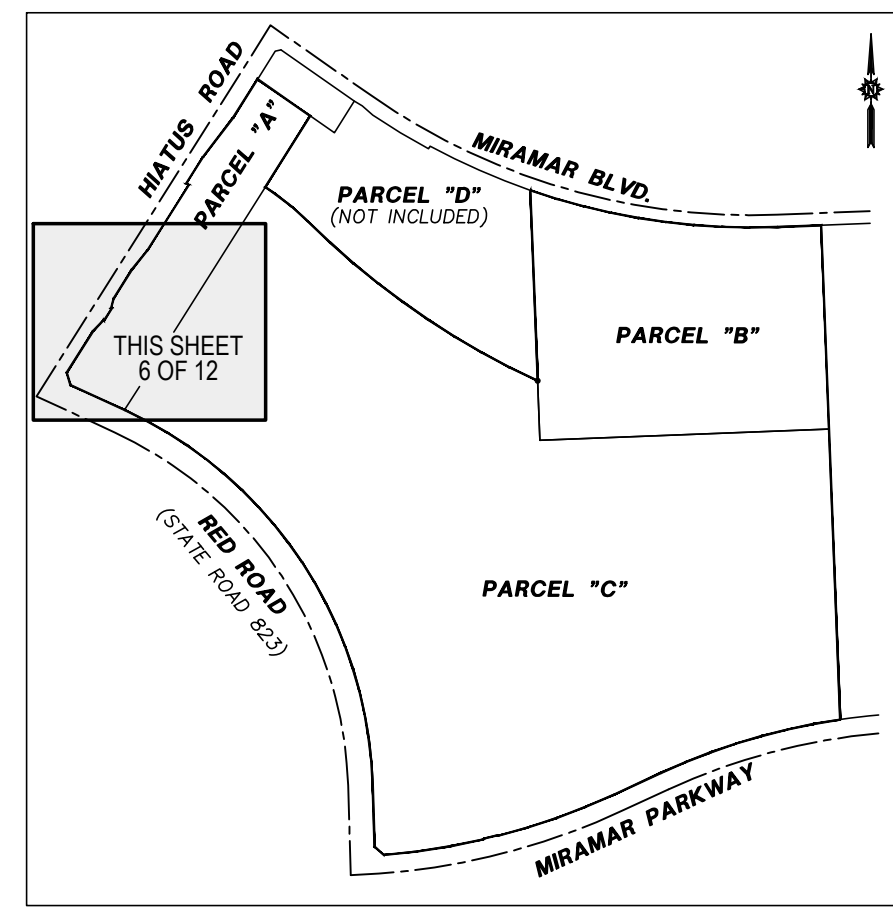
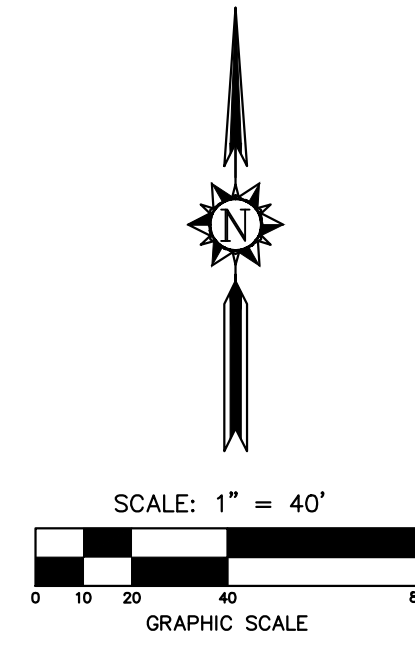
SHEET NO.
6 OF 12



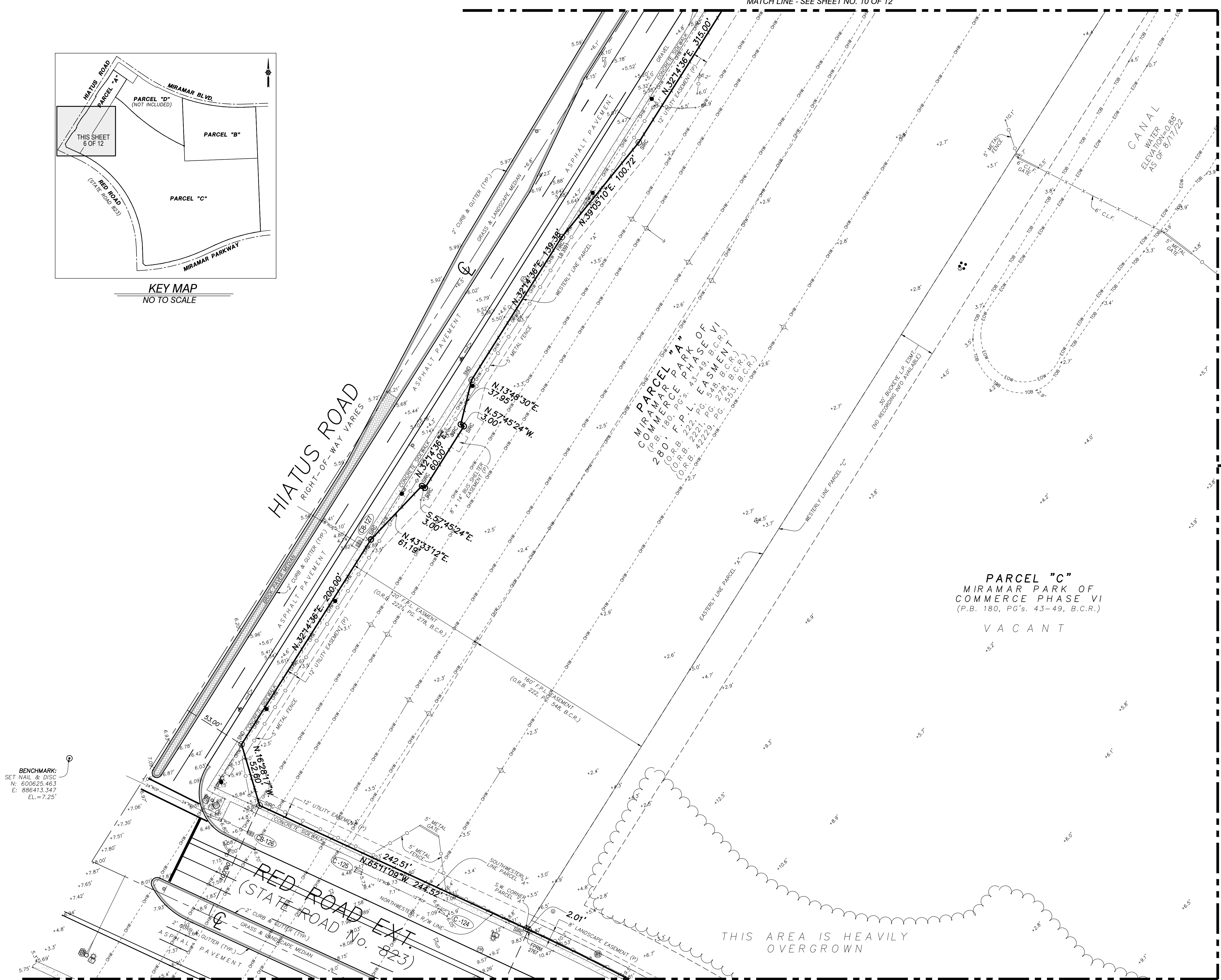
ELEVATIONS SHOWN HEREON ARE BASED ON THE NORTH AMERICAN VERTICAL DATUM 1988 (NAVD 1988)

VERTICAL DATUM CONVERSION:
ALL ELEVATIONS SHOWN HEREON ARE REFERENCED TO NAVD 88
VERTICAL DATUM UNLESS NOTED OTHERWISE. TO CONVERT FROM NAVD
88 TO NGVD 29 DATUM ADD (+) 1.58' TO THE NAVD 88 ELEVATIONS.

SKETCH OF BOUNDARY AND TOPOGRAPHIC SURVEY



KEY MAP
NO TO SCALE



BENCHMARK:
SET NAIL & DISC
N: 600625.463
E: 886413.347
EL. = 7.25'

THIS AREA IS HEAVILY
OVERGROWN

MATCH LINE - SEE SHEET NO. 10 OF 12

MATCH LINE - SEE SHEET NO. 11 OF 12

MATCH LINE - SEE SHEET NO. 3 OF 5

MATCH LINE - SEE SHEET NO. 4 OF 12



ELEVATIONS SHOWN HEREON ARE BASED ON THE NORTH AMERICAN VERTICAL DATUM 1988 (NAVD 1988)

VERTICAL DATUM CONVERSION:
ALL ELEVATIONS SHOWN HEREON ARE REFERENCED TO NAVD 88
VERTICAL DATUM UNLESS NOTED OTHERWISE TO CONVERT FROM NAVD
88 TO NGVD 29 DATUM ADD (+) 1.58' TO THE NAVD 88 ELEVATIONS.

NO.	REVISION	DATE	BY:

TEL: (954) 585-0997
WWW.STONERSURVEYS.COM

STONER
SURVEYORS & MAPPERS
Licensed Business No. 6633

4341 S.W. 62nd AVENUE, DAVIE, FLORIDA 33314

BOUNDARY AND TOPOGRAPHIC SURVEY
SUNBEAM DEVELOPMENT CORP.
PARCELS "A", "B" AND "C",
MIRAMAR PARK OF COMMERCE PHASE VI,
PLAT BOOK 180, PAGES 43 THRU 50, B.C.R.,
CITY OF MIRAMAR, FLORIDA

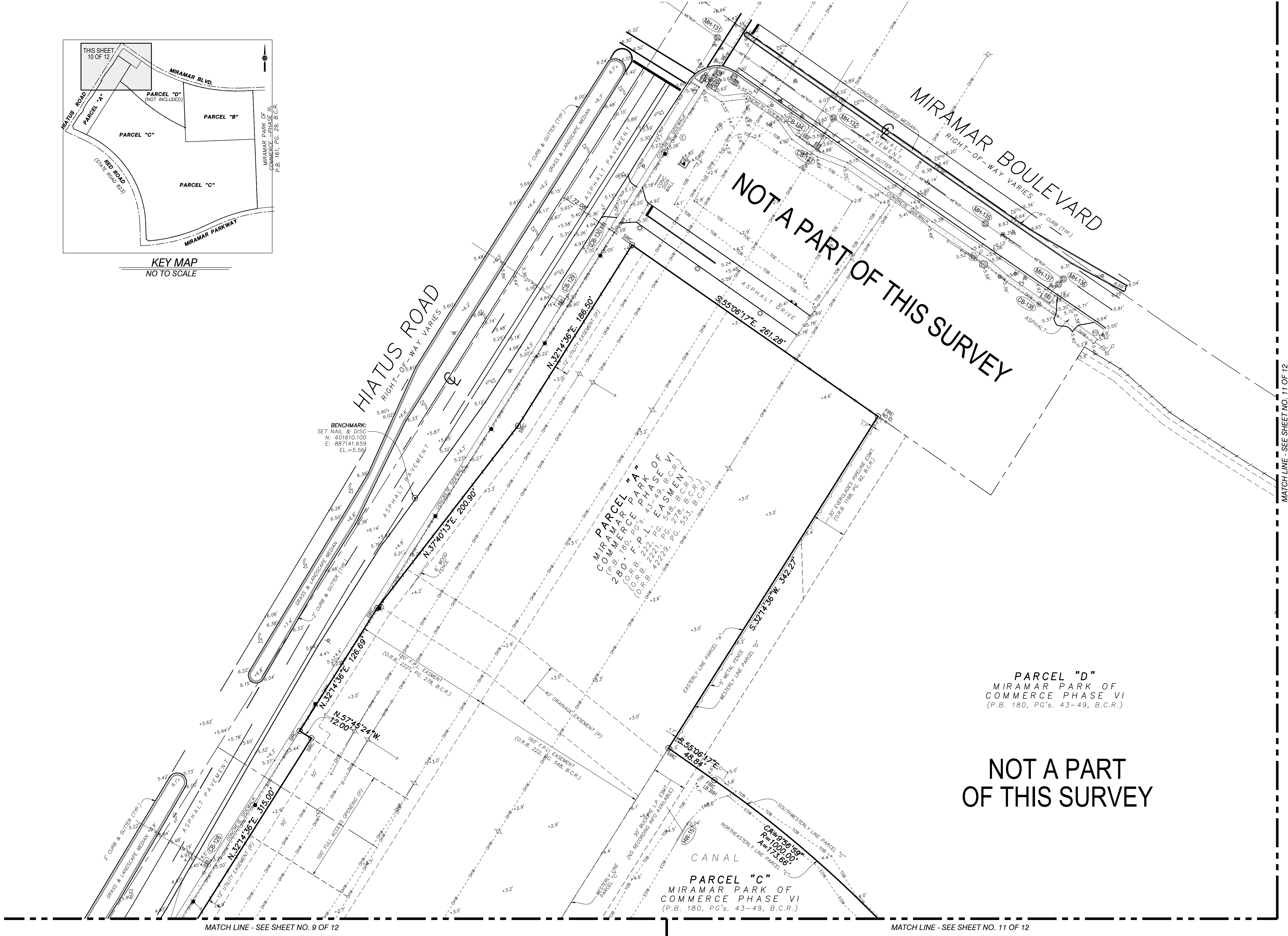
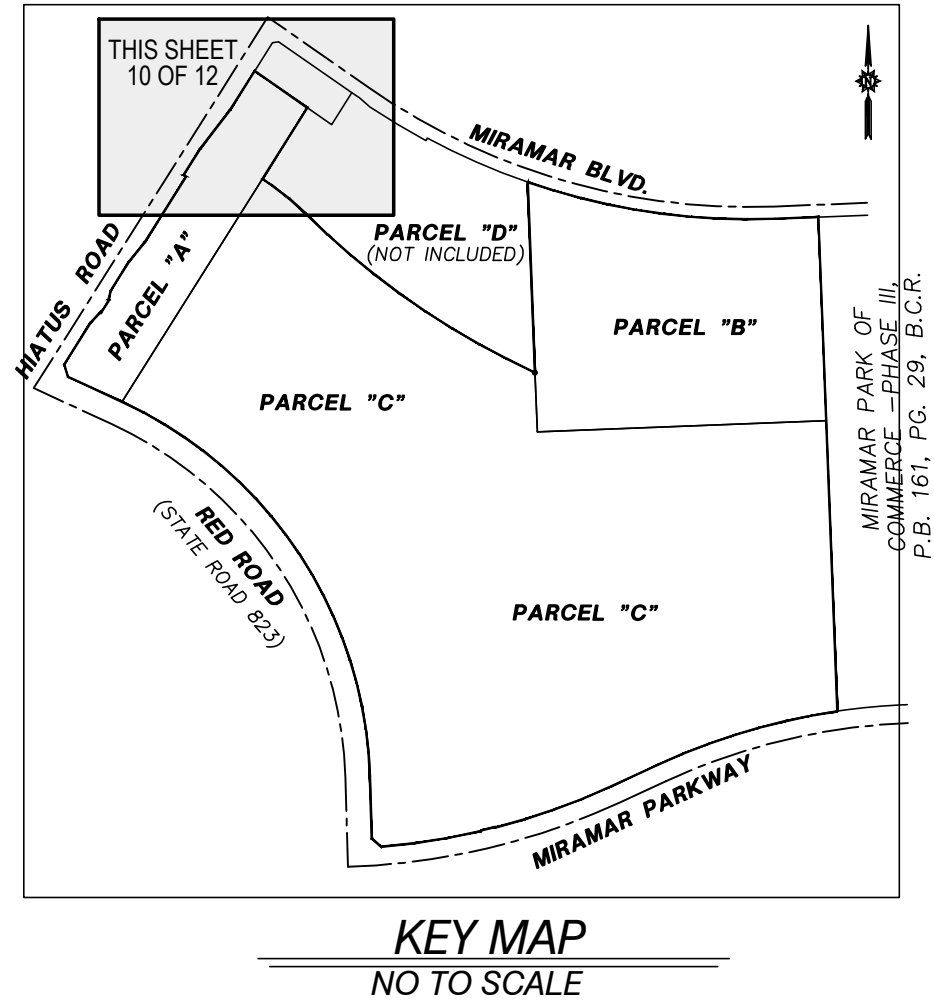
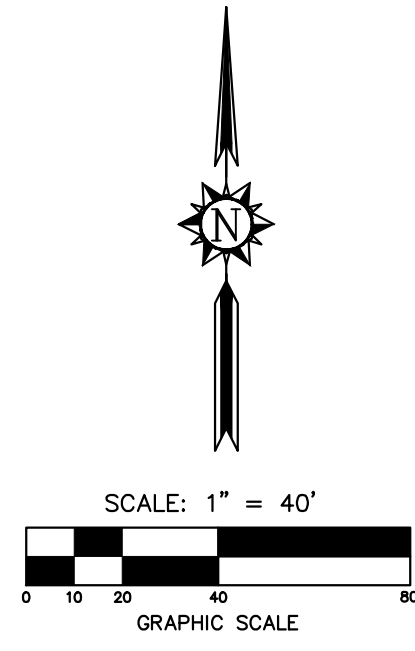
LAST DATE OF FIELD SURVEY	08/17/22
DRAWN: DMS/DRL	
CHECKED: JDS	
BOOK/PAGE(S)	160/1-27
& DATA COLLECTOR	

SEAL
JAMES D. STONER
PROFESSIONAL SURVEYOR
AND MAPPER NO. 4039
STATE OF FLORIDA

PROJECT
22-9426

SHEET NO.
9 OF 12

SKETCH OF BOUNDARY AND TOPOGRAPHIC SURVEY



MATCH LINE - SEE SHEET NO. 11 OF 12

MATCH LINE - SEE SHEET NO. 11 OF 12

MATCH LINE - SEE SHEET NO. 11 OF 12



ELEVATIONS SHOWN HEREON ARE BASED ON THE NORTH AMERICAN VERTICAL DATUM 1988 (NAVD 1988)

VERTICAL DATUM CONVERSION:
 ALL ELEVATIONS SHOWN HEREON ARE REFERENCED TO NAVD 88
 VERTICAL DATUM UNLESS NOTED OTHERWISE. TO CONVERT FROM NAVD
 88 TO NGVD 29 DATUM ADD (+) 1.58' TO THE NAVD 88 ELEVATIONS.

NO.	REVISION	DATE	BY:

TEL: (954) 585-0997
 www.stonersurveyors.com

STONER
 SURVEYORS • MAPPERS

Licensed Business No. 6633
 4341 S.W. 62nd Avenue, Davie, Florida 33314

BOUNDARY AND TOPOGRAPHIC SURVEY
SUNBEAM DEVELOPMENT CORP.
MIRAMAR PARK OF COMMERCE PHASE VI,
PARCELS "A", "B" AND "C",
PLAT BOOK 180, PAGES 43 THRU 50, B.C.R.,
CITY OF MIRAMAR, FLORIDA

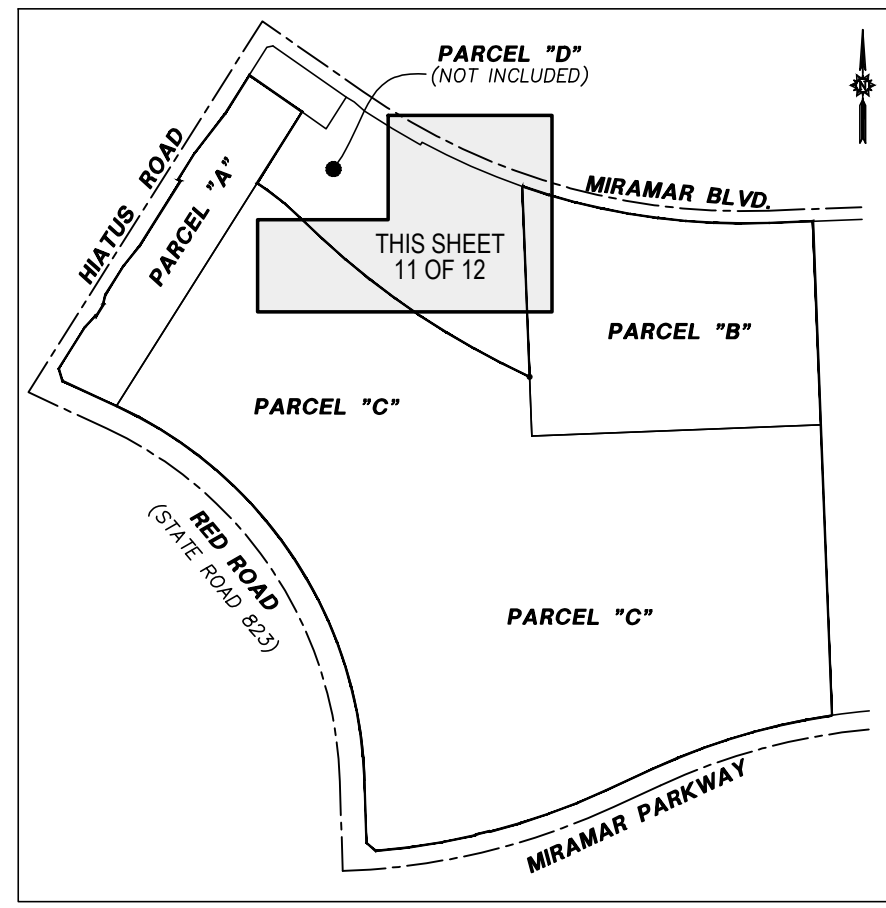
LAST DATE OF FIELD SURVEY	8/17/22
DRAWN: DMS/DNL	
CHECKED: DMS	
BOOK/PAGE(S):	160/1-27
& DATA COLLECTOR	

SEAL
 JAMES D. STONER
 PROFESSIONAL SURVEYOR
 AND MAPPER NO. 4039
 STATE OF FLORIDA

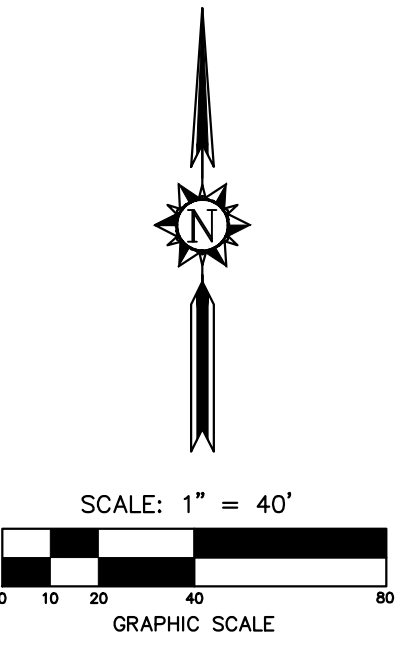
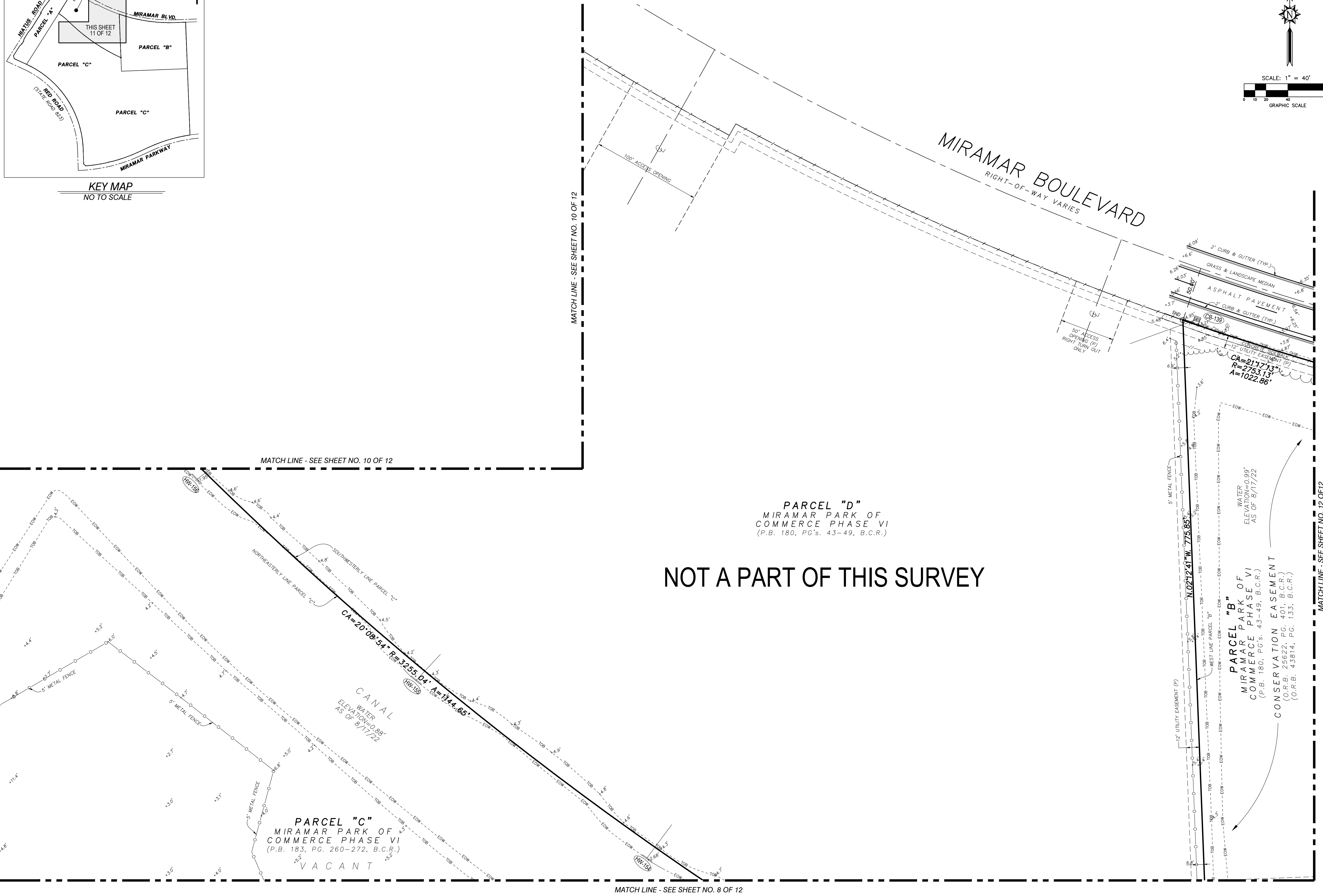
PROJECT
 22-9426

SHEET NO.
 10 OF 12

SKETCH OF BOUNDARY AND TOPOGRAPHIC SURVEY



KEY MAP
NO TO SCALE



ELEVATIONS SHOWN HEREON ARE BASED ON THE NORTH AMERICAN VERTICAL DATUM 1988 (NAVD 1988)

VERTICAL DATUM CONVERSION:
ALL ELEVATIONS SHOWN HEREON ARE REFERENCED TO NAVD 88 VERTICAL DATUM UNLESS NOTED OTHERWISE. TO CONVERT FROM NAVD 88 TO NGVD 29 DATUM ADD (+) 1.58' TO THE NAVD 88 ELEVATIONS.

NO.	REVISION	DATE	BY:

TEL: (954) 585-0997
www.stonersurveyors.com

STONER
SURVEYORS • MAPPERS
Licensed Business No. 6633

4341 S.W. 62nd Avenue, Davie, Florida 33314

BOUNDARY AND TOPOGRAPHIC SURVEY
SUNBEAM DEVELOPMENT CORP.
MIRAMAR PARK OF COMMERCE PHASE VI, PARCELS "A", "B" AND "C",
MIRAMAR PARK OF COMMERCE PHASE VI,
PLAT BOOK 180, PAGES 43 THRU 50, B.C.R.,
CITY OF MIRAMAR, FLORIDA

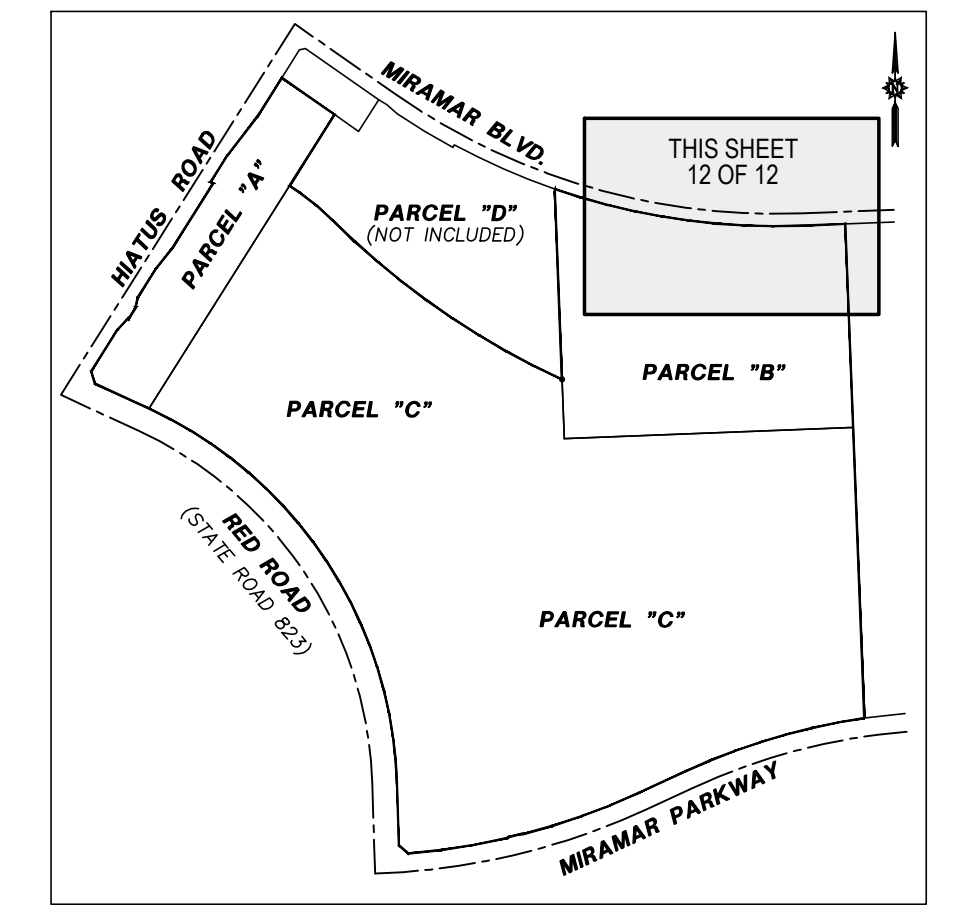
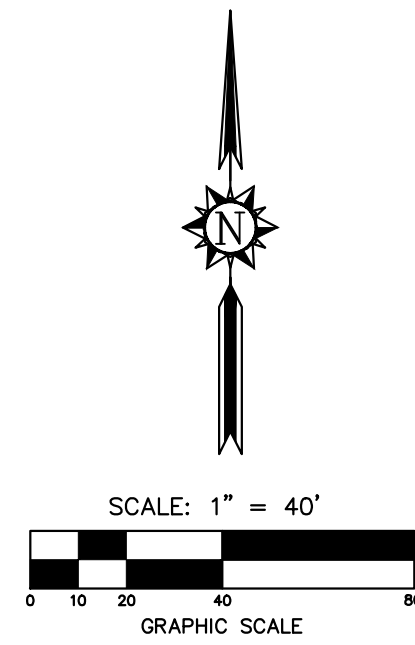
LAST DATE OF FIELD SURVEY	05/8/17/22
DRAWN: DMS/DNL	
CHECKED: JDS	
BOOK/PAGE(S)	160/1-27
& DATA COLLECTOR	

SEAL
JAMES D. STONER
PROFESSIONAL SURVEYOR
AND MAPPER NO. 4039
STATE OF FLORIDA

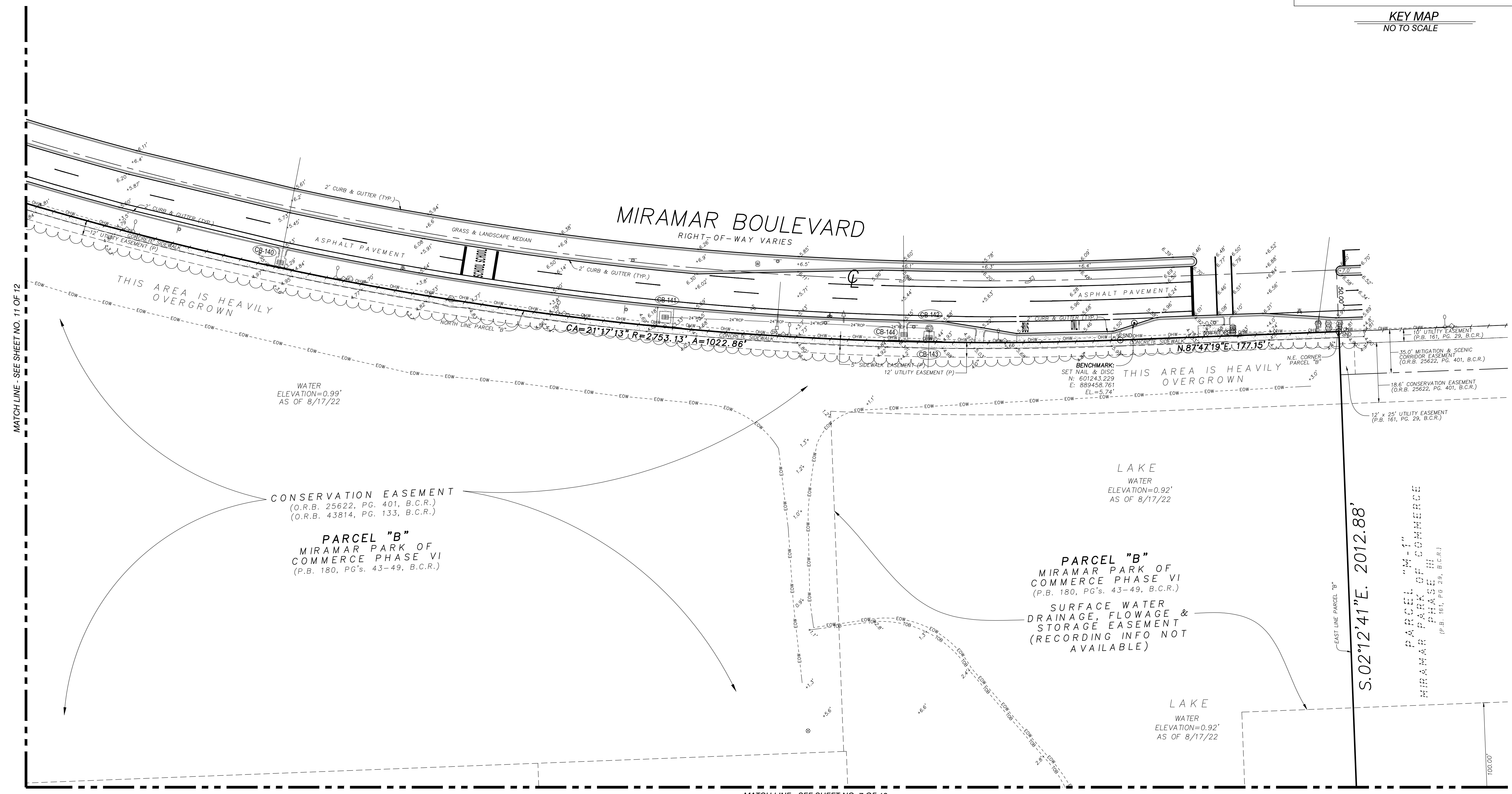
PROJECT
22-9426

SHEET NO.
11 OF 12

SKETCH OF BOUNDARY AND TOPOGRAPHIC SURVEY



KEY MAP
NO TO SCALE



MATCH LINE - SEE SHEET NO. 11 OF 12

MATCH LINE - SEE SHEET NO. 7 OF 12

NO.	REVISION	DATE	BY

TEL: (954) 585-0937
WWW.STONERSURVEYORS.COM

STONER
SURVEYORS & MAPPERS
Licensed Business No. 6633
4341 S.W. 62nd AVENUE, DAVIE, FLORIDA 33314

BOUNDARY AND TOPOGRAPHIC SURVEY
SUNBEAM DEVELOPMENT CORP.
PARCELS "A", "B" AND "C",
MIRAMAR PARK OF COMMERCE PHASE VI,
PLAT BOOK 180, PAGES 43 THRU 50, B.C.R.,
CITY OF MIRAMAR, FLORIDA

LAST DATE OF FIELD SURVEY	8/17/22
DRAWN BY	DMS/DRL
CHECKED BY	JDS
BOOK/PAGE(S)	160/1-27
BY	JDS & DATA COLLECTOR

SEAL

JAMES D. STONER
PROFESSIONAL SURVEYOR
AND MAPPER NO. 4039
STATE OF FLORIDA

PROJECT
22-9426

SHEET NO.
12 OF 12



ELEVATIONS SHOWN HEREON ARE BASED ON THE NORTH AMERICAN VERTICAL DATUM 1988 (NAVD 1988)

VERTICAL DATUM CONVERSION:
ALL ELEVATIONS SHOWN HEREON ARE REFERENCED TO NAVD 88 VERTICAL DATUM UNLESS NOTED OTHERWISE. TO CONVERT FROM NAVD 88 TO NGVD 29 DATUM ADD (+) 1.58' TO THE NAVD 88 ELEVATIONS.